

Mouse Cathepsin D Recombinant Matched Antibody Pair, PBS Only

Catalog Number: **MP02204-2**

Capture Antibody Information

Catalog Number:
85964-4-PBS
Host:
Rabbit
Isotype:
IgG
Purification Method:
Protein A purification

Clone ID:
250329D6
Reactivity:
mouse
GenBank:
NM_009983.3
Immunogen Catalog Number:
Eg2986

Conjugate:
Unconjugated
Full name:
cathepsin D
Gene ID:
13033

Detection Antibody Information

Catalog Number:
85964-1-PBS
Host:
Rabbit
Isotype:
IgG
Purification Method:
Protein A purification

Clone ID:
250329A3
Reactivity:
mouse
GenBank:
NM_009983.3
Immunogen Catalog Number:
Eg2986

Conjugate:
Unconjugated
Full name:
cathepsin D
Gene ID:
13033

Applications

Tested Applications:
Sandwich ELISA

Range:
0.625-40 ng/mL (Sandwich ELISA)

Recommended Dilutions:
It is recommended that this reagent should be titrated in each testing system to obtain optimal results.

Product Information

MP02204-2 targets Cathepsin D in immunoassays as a matched antibody pair. Validated in Sandwich ELISA.

Capture antibody: Mouse Ctsd Recombinant antibody, PBS Only (Capture) 85964-4-PBS (250329D6). 100 μ g. Concentration 1 mg/mL.

Detection antibody: Mouse Cathepsin D Recombinant antibody, PBS Only (Detector) 85964-1-PBS (250329A3). 100 μ g. Concentration 1 mg/mL.

Unconjugated rabbit recombinant monoclonal antibody pair in PBS only storage buffer at a concentration of 1 mg/mL, ready for conjugation. Created using Proteintech's proprietary in-house recombinant technology. Recombinant production enables unrivalled batch-to-batch consistency, easy scale-up, and future security of supply.

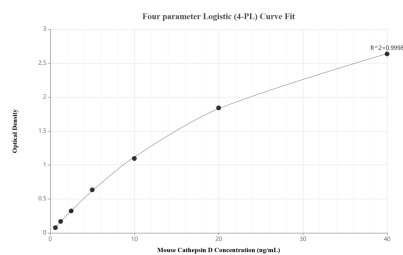
Matched antibody pairs are designed for use in a variety of assays and platforms that require matched antibody pairs.

Antibody use should be optimized for each application and assay.

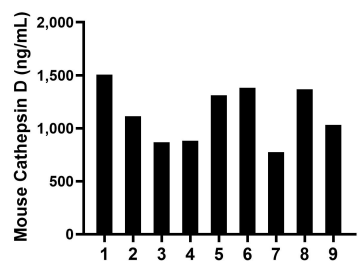
Storage

Storage:
Store at -80°C.
The product is shipped with ice packs. Upon receipt, store it immediately at -80°C
Storage buffer:
PBS only

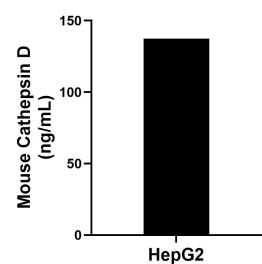
Selected Validation Data



Sandwich ELISA standard curve of MP02204-2, Human Cathepsin D Recombinant Matched Antibody Pair - PBS only. 85964-4-PBS was coated to a plate as the capture antibody and incubated with serial dilutions of standard Eg2986. 85964-1-PBS was HRP conjugated as the detection antibody. Range: 0.625-40 ng/mL



Serum of nine mice was measured. The Cathepsin D concentration of detected samples was determined to be 1,136.75 ng/mL with a range of 773.75-1,505.92 pg/mL



The mean Cathepsin D concentration was determined to be 137.30 ng/mL in HepG2 cell extract based on a 0.90 mg/mL extract load.