

Cyclin B1 Recombinant Matched Antibody Pair, PBS Only

Catalog Number: **MP02202-2**

Capture Antibody Information

Catalog Number: 85895-4-PBS	Clone ID: 250227B2	Conjugate: Unconjugated
Host: Rabbit	Reactivity: human	Full name: cyclin B1
Isotype: IgG	GenBank: BC006510	Gene ID: 891
Purification Method: Protein A purification	Immunogen Catalog Number: Ag29426	

Detection Antibody Information

Catalog Number: 85895-1-PBS	Clone ID: 250227H1	Conjugate: Unconjugated
Host: Rabbit	Reactivity: human	Full name: cyclin B1
Isotype: IgG	GenBank: BC006510	Gene ID: 891
Purification Method: Protein A purification	Immunogen Catalog Number: Ag29426	

Applications

Tested Applications: Sandwich ELISA	Range: 0.156-10 ng/mL (Sandwich ELISA)	Recommended Dilutions: It is recommended that this reagent should be titrated in each testing system to obtain optimal results.
---	--	---

Product Information

MP02202-2 targets Cyclin B1 in immunoassays as a matched antibody pair. Validated in Sandwich ELISA.

Capture antibody: CCNB1 Recombinant antibody, PBS Only (Capture) 85895-4-PBS (250227B2). 100 µg. Concentration 1 mg/mL.

Detection antibody: CCNB1 Recombinant antibody, PBS Only (Detector) 85895-1-PBS (250227H1). 100 µg. Concentration 1 mg/mL.

Unconjugated rabbit recombinant monoclonal antibody pair in PBS only storage buffer at a concentration of 1 mg/mL, ready for conjugation. Created using Proteintech's proprietary in-house recombinant technology. Recombinant production enables unrivalled batch-to-batch consistency, easy scale-up, and future security of supply.

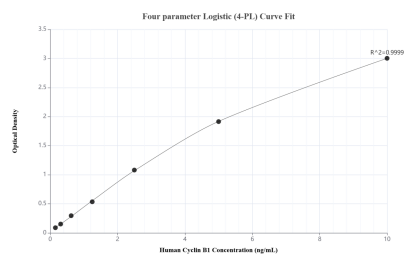
Matched antibody pairs are designed for use in a variety of assays and platforms that require matched antibody pairs.

Antibody use should be optimized for each application and assay.

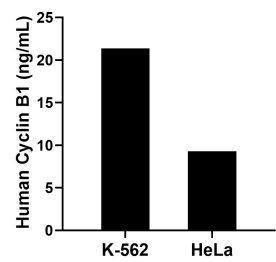
Storage

Storage:
Store at -80°C.
The product is shipped with ice packs. Upon receipt, store it immediately at -80°C
Storage buffer:
PBS only

Selected Validation Data



Sandwich ELISA standard curve of MP02202-2, Human Cyclin B1 Recombinant Matched Antibody Pair - PBS only. 85895-4-PBS was coated to a plate as the capture antibody and incubated with serial dilutions of standard Ag29426. 85895-1-PBS was HRP conjugated as the detection antibody. Range: 0.156-10 ng/mL



The mean Cyclin B1 concentration was determined to be 21.36 ng/mL in K-562 cell extract based on a 2.50 mg/mL extract load and 9.28 ng/mL in HeLa cell extract based on a 1.30 mg/mL extract load.