

SPARCL1 Recombinant Matched Antibody Pair, PBS Only

Catalog Number: **MP02200-1**

Capture Antibody Information

Catalog Number: 85906-3-PBS	Clone ID: 250331D2	Conjugate: Unconjugated
Host: Rabbit	Reactivity: human	Full name: SPARC-like 1 (hevin)
Isotype: IgG	GenBank: NM_004684.5	Gene ID: 8404
Purification Method: Protein A purification	Immunogen Catalog Number: Eg2837	

Detection Antibody Information

Catalog Number: 85906-2-PBS	Clone ID: 250331B4	Conjugate: Unconjugated
Host: Rabbit	Reactivity: human	Full name: SPARC-like 1 (hevin)
Isotype: IgG	GenBank: NM_004684.5	Gene ID: 8404
Purification Method: Protein A purification	Immunogen Catalog Number: Eg2837	

Applications

Tested Applications: Cytometric bead array, Sandwich ELISA	Range: 0.781-100 ng/mL (Cytometric Bead Array) 0.156-10 ng/mL (Sandwich ELISA)	Recommended Dilutions: It is recommended that this reagent should be titrated in each testing system to obtain optimal results.
---	--	--

Product Information

MP02200-1 targets SPARCL1 in immunoassays as a matched antibody pair. Validated in Cytometric bead array, Sandwich ELISA.

Capture antibody: SPARCL1 Recombinant antibody, PBS Only (Capture) 85906-3-PBS (250331D2). 100 µg. Concentration 1 mg/mL.

Detection antibody: SPARCL1 Recombinant antibody, PBS Only (Detector) 85906-2-PBS (250331B4). 100 µg. Concentration 1 mg/mL.

Unconjugated rabbit recombinant monoclonal antibody pair in PBS only storage buffer at a concentration of 1 mg/mL, ready for conjugation. Created using Proteintech's proprietary in-house recombinant technology. Recombinant production enables unrivalled batch-to-batch consistency, easy scale-up, and future security of supply.

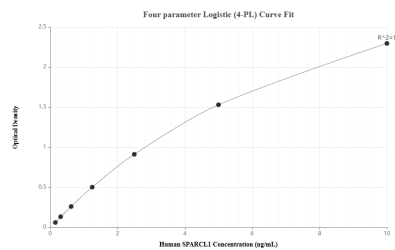
Matched antibody pairs are designed for use in a variety of assays and platforms that require matched antibody pairs.

Antibody use should be optimized for each application and assay.

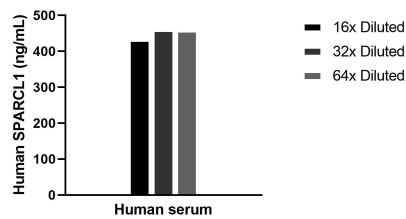
Storage

Storage:
Store at -80°C.
The product is shipped with ice packs. Upon receipt, store it immediately at -80°C
Storage buffer:
PBS only

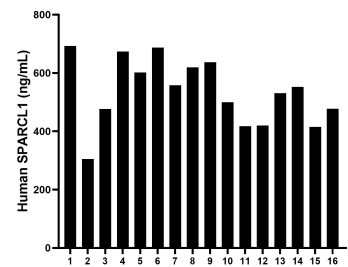
Selected Validation Data



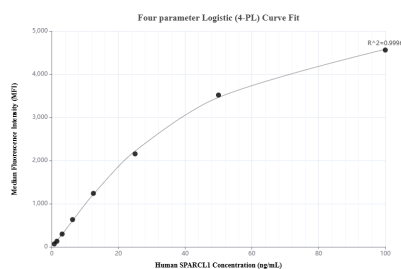
Sandwich ELISA standard curve of MP02200-1, Human SPARCL1 Recombinant Matched Antibody Pair - PBS only. 85906-3-PBS was coated to a plate as the capture antibody and incubated with serial dilutions of standard Eg2837. 85906-2-PBS was HRP conjugated as the detection antibody. Range: 0.156-10 ng/mL



The mean SPARCL1 concentration was determined to be 448.7 ng/mL in Human serum.



Serum of sixteen individual healthy human donors was measured. The human SPARCL1 concentration of detected samples was determined to be 535.16 ng/mL with a range of 304.76 - 693.17 ng/mL



Cytometric bead array standard curve of MP02200-1, SPARCL1 Recombinant Matched Antibody Pair, PBS Only. Capture antibody: 85906-3-PBS. Detection antibody: 85906-2-PBS. Standard: Eg2837. Range: 0.781-100 ng/mL