

DDX6 Recombinant Matched Antibody Pair, PBS Only

Catalog Number: MP02197-1

Capture Antibody Information

Catalog Number: 85686-3-PBS	Clone ID: 242957E11	Conjugate: Unconjugated
Host: Rabbit	Reactivity: human	Full name: DEAD (Asp-Glu-Ala-Asp) box polypeptide 6
Isotype: IgG	GenBank: BC065007	Gene ID: 1656
Purification Method: Protein A purification	Immunogen Catalog Number: Ag6211	

Detection Antibody Information

Catalog Number: 85686-2-PBS	Clone ID: 242957G3	Conjugate: Unconjugated
Host: Rabbit	Reactivity: human	Full name: DEAD (Asp-Glu-Ala-Asp) box polypeptide 6
Isotype: IgG	GenBank: BC065007	Gene ID: 1656
Purification Method: Protein A purification	Immunogen Catalog Number: Ag6211	

Applications

Tested Applications: Sandwich ELISA	Range: 3.13-200 ng/mL (Sandwich ELISA)	Recommended Dilutions: It is recommended that this reagent should be titrated in each testing system to obtain optimal results.
---	--	---

Product Information

MP02197-1 targets DDX6 in immunoassays as a matched antibody pair. Validated in Sandwich ELISA.

Capture antibody: P54 Recombinant antibody, PBS Only (Capture) 85686-3-PBS (242957E11). 100 µg. Concentration 1 mg/mL.

Detection antibody: P54 Recombinant antibody, PBS Only (Detector) 85686-2-PBS (242957G3). 100 µg. Concentration 1 mg/mL.

Unconjugated rabbit recombinant monoclonal antibody pair in PBS only storage buffer at a concentration of 1 mg/mL, ready for conjugation. Created using Proteintech's proprietary in-house recombinant technology. Recombinant production enables unrivalled batch-to-batch consistency, easy scale-up, and future security of supply.

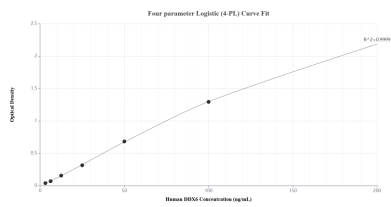
Matched antibody pairs are designed for use in a variety of assays and platforms that require matched antibody pairs.

Antibody use should be optimized for each application and assay.

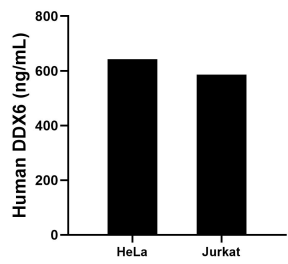
Storage

Storage:
Store at -80°C.
The product is shipped with ice packs. Upon receipt, store it immediately at -80°C
Storage buffer:
PBS only

Selected Validation Data



Sandwich ELISA standard curve of MP02197-1, Human DDX6 Recombinant Matched Antibody Pair - PBS only. 85686-3-PBS was coated to a plate as the capture antibody and incubated with serial dilutions of standard Ag6211. 85686-2-PBS was HRP conjugated as the detection antibody. Range: 3.13-200 ng/mL



The mean DDX6 concentration was determined to be 642.84 ng/mL in HeLa cell extract based on a 1.80 mg/mL extract load and 585.66 ng/mL in Jurkat cell extract based on a 1.90 mg/mL extract load.