

CD109 Recombinant Matched Antibody Pair, PBS Only

Catalog Number: **MP02191-2**

Capture Antibody Information

Catalog Number:
85924-3-PBS

Host:
Rabbit

Isotype:
IgG

Purification Method:
Protein A purification

Clone ID:
250327E5

Reactivity:
human

GenBank:
NM_133493.5

Immunogen Catalog Number:
Eg2673

Conjugate:
Unconjugated

Full name:
CD109 molecule

Gene ID:
135228

Detection Antibody Information

Catalog Number:
85924-2-PBS

Host:
Rabbit

Isotype:
IgG

Purification Method:
Protein A purification

Clone ID:
250327A7

Reactivity:
human

GenBank:
NM_133493.5

Immunogen Catalog Number:
Eg2673

Conjugate:
Unconjugated

Full name:
CD109 molecule

Gene ID:
135228

Applications

Tested Applications:
Cytometric bead array, Sandwich ELISA

Range:
0.938-120 ng/mL (Cytometric Bead Array)
0.313-20 ng/mL (Sandwich ELISA)

Recommended Dilutions:
It is recommended that this reagent should be titrated in each testing system to obtain optimal results.

Product Information

MP02191-2 targets CD109 in immunoassays as a matched antibody pair. Validated in Cytometric bead array, Sandwich ELISA.

Capture antibody: CD109 Recombinant antibody, PBS Only (Capture/Detector) 85924-3-PBS (250327E5). 100 µg. Concentration 1 mg/mL.

Detection antibody: CD109 Recombinant antibody, PBS Only (Detector) 85924-2-PBS (250327A7). 100 µg. Concentration 1 mg/mL.

Unconjugated rabbit recombinant monoclonal antibody pair in PBS only storage buffer at a concentration of 1 mg/mL, ready for conjugation. Created using Proteintech's proprietary in-house recombinant technology. Recombinant production enables unrivalled batch-to-batch consistency, easy scale-up, and future security of supply.

Matched antibody pairs are designed for use in a variety of assays and platforms that require matched antibody pairs.

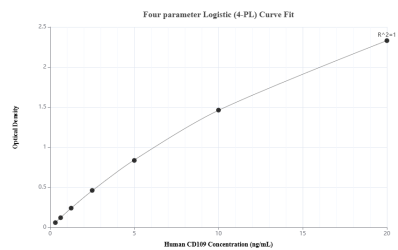
Antibody use should be optimized for each application and assay.

Storage

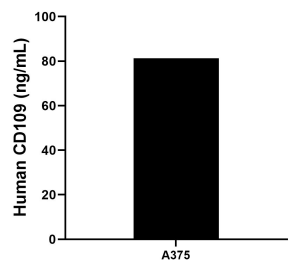
Storage:
Store at -80°C.
The product is shipped with ice packs. Upon receipt, store it immediately at -80°C

Storage buffer:
PBS only

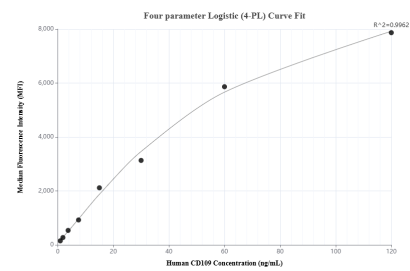
Selected Validation Data



Sandwich ELISA standard curve of MP02191-2, Human CD109 Recombinant Matched Antibody Pair - PBS only. 85924-3-PBS was coated to a plate as the capture antibody and incubated with serial dilutions of standard Eg2673. 85924-2-PBS was HRP conjugated as the detection antibody. Range: 0.313-20 ng/mL



The mean CD109 concentration was determined to be 81.31 ng/mL in A375 cell extract based on a 1.8 mg/mL extract load.



Cytometric bead array standard curve of MP02191-2, CD109 Recombinant Matched Antibody Pair, PBS Only. Capture antibody: 85924-3-PBS. Detection antibody: 85924-2-PBS. Standard: Eg2673. Range: 0.938-120 ng/mL