

# RBBP6 Recombinant Matched Antibody Pair, PBS Only

Catalog Number: **MP02182-2**

## Capture Antibody Information

**Catalog Number:**  
85884-2-PBS  
**Host:**  
Rabbit  
**Isotype:**  
IgG  
**Purification Method:**  
Protein A purification

**Clone ID:**  
250142D12  
**Reactivity:**  
human  
**GenBank:**  
BC029352  
**Immunogen Catalog Number:**  
Ag2484

**Conjugate:**  
Unconjugated  
**Full name:**  
retinoblastoma binding protein 6  
**Gene ID:**  
5930

## Detection Antibody Information

**Catalog Number:**  
85884-1-PBS  
**Host:**  
Rabbit  
**Isotype:**  
IgG  
**Purification Method:**  
Protein A purification

**Clone ID:**  
250142B11  
**Reactivity:**  
human  
**GenBank:**  
BC029352  
**Immunogen Catalog Number:**  
Ag2484

**Conjugate:**  
Unconjugated  
**Full name:**  
retinoblastoma binding protein 6  
**Gene ID:**  
5930

## Applications

**Tested Applications:**  
Cytometric bead array, Sandwich ELISA

**Range:**  
0.625-80 ng/mL (Cytometric Bead Array)  
0.156-10 ng/mL (Sandwich ELISA)

**Recommended Dilutions:**  
It is recommended that this reagent should be titrated in each testing system to obtain optimal results.

## Product Information

MP02182-2 targets RBBP6 in immunoassays as a matched antibody pair. Validated in Cytometric bead array, Sandwich ELISA.

Capture antibody: RBBP6 Recombinant antibody, PBS Only (Capture) 85884-2-PBS (250142D12). 100 µg. Concentration 1 mg/mL.

Detection antibody: RBBP6 Recombinant antibody, PBS Only (Detector) 85884-1-PBS (250142B11). 100 µg. Concentration 1 mg/mL.

Unconjugated rabbit recombinant monoclonal antibody pair in PBS only storage buffer at a concentration of 1 mg/mL, ready for conjugation. Created using Proteintech's proprietary in-house recombinant technology. Recombinant production enables unrivalled batch-to-batch consistency, easy scale-up, and future security of supply.

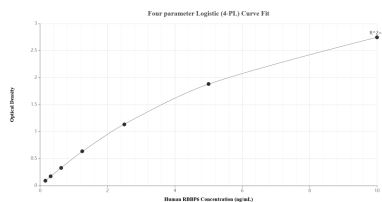
Matched antibody pairs are designed for use in a variety of assays and platforms that require matched antibody pairs.

Antibody use should be optimized for each application and assay.

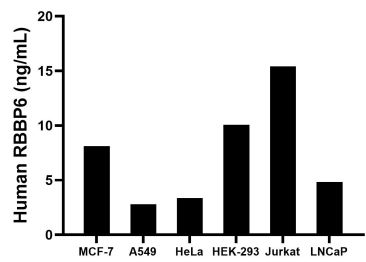
## Storage

**Storage:**  
Store at -80°C.  
**The product is shipped with ice packs. Upon receipt, store it immediately at -80°C**  
**Storage buffer:**  
PBS only

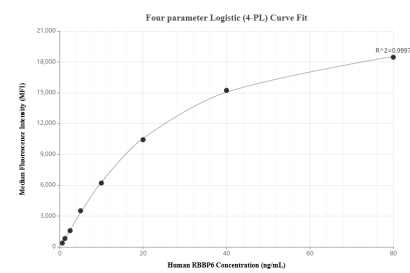
Selected Validation Data



Sandwich ELISA standard curve of MP02182-2, Human RBBP6 Recombinant Matched Antibody Pair - PBS only. 85884-2-PBS was coated to a plate as the capture antibody and incubated with serial dilutions of standard Ag2484. 85884-1-PBS was HRP conjugated as the detection antibody. Range: 0.156-10 ng/mL



The mean RBBP6 concentration was determined to be 8.11 ng/mL in MCF-7 cell extract based on a 2.40 mg/mL extract load, 2.79 ng/mL in A549 cell extract based on a 2.40 mg/mL extract load, 3.36 ng/mL in HeLa cell extract based on a 0.90 mg/mL extract load, 10.06 ng/mL in HEK-293 cell extract based on a 2.90 mg/mL extract load, 15.41 ng/mL in Jurkat cell extract based on a 2.20 mg/mL extract load and 4.84 ng/mL in LNCaP cell extract based on a 1.20 mg/mL extract



Cytometric bead array standard curve of MP02182-2, RBBP6 Recombinant Matched Antibody Pair, PBS Only. Capture antibody: 85884-2-PBS. Detection antibody: 85884-1-PBS. Standard: Ag2484. Range: 0.625-80 ng/mL