

# Mouse Timp2 Recombinant Matched Antibody Pair, PBS Only

Catalog Number: **MP02176-3**

## Capture Antibody Information

**Catalog Number:**  
85882-4-PBS  
**Host:**  
Rabbit  
**Isotype:**  
IgG  
**Purification Method:**  
Protein A purification

**Clone ID:**  
250231D5  
**Reactivity:**  
mouse  
**GenBank:**  
uniprot无NM号  
**Immunogen Catalog Number:**  
Eg2960

**Conjugate:**  
Unconjugated  
**Full name:**  
tissue inhibitor of metalloproteinase 2  
**Gene ID:**  
21858

## Detection Antibody Information

**Catalog Number:**  
85882-2-PBS  
**Host:**  
Rabbit  
**Isotype:**  
IgG  
**Purification Method:**  
Protein A purification

**Clone ID:**  
250231B8  
**Reactivity:**  
mouse  
**GenBank:**  
uniprot无NM号  
**Immunogen Catalog Number:**  
Eg2960

**Conjugate:**  
Unconjugated  
**Full name:**  
tissue inhibitor of metalloproteinase 2  
**Gene ID:**  
21858

## Applications

**Tested Applications:**  
Sandwich ELISA

**Range:**  
78.1-5000 pg/mL (Sandwich ELISA)

**Recommended Dilutions:**  
It is recommended that this reagent should be titrated in each testing system to obtain optimal results.

## Product Information

MP02176-3 targets Timp2 in immunoassays as a matched antibody pair. Validated in Sandwich ELISA.

Capture antibody: Mouse Timp2 Recombinant antibody, PBS Only (Capture) 85882-4-PBS (250231D5). 100 µg. Concentration 1 mg/mL.

Detection antibody: Mouse Timp2 Recombinant antibody, PBS Only (Capture/Detector) 85882-2-PBS (250231B8). 100 µg. Concentration 1 mg/mL.

Unconjugated rabbit recombinant monoclonal antibody pair in PBS only storage buffer at a concentration of 1 mg/mL, ready for conjugation. Created using Proteintech's proprietary in-house recombinant technology. Recombinant production enables unrivalled batch-to-batch consistency, easy scale-up, and future security of supply.

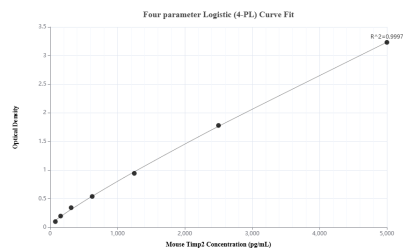
Matched antibody pairs are designed for use in a variety of assays and platforms that require matched antibody pairs.

Antibody use should be optimized for each application and assay.

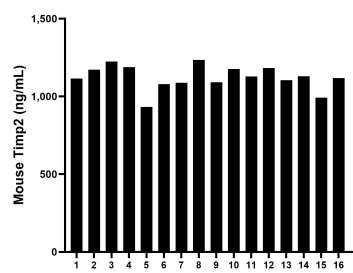
## Storage

**Storage:**  
Store at -80°C.  
**The product is shipped with ice packs. Upon receipt, store it immediately at -80°C**  
**Storage buffer:**  
PBS only

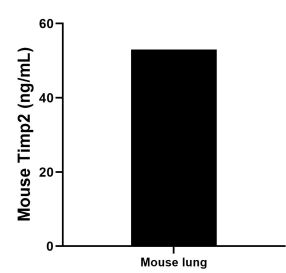
## Selected Validation Data



Sandwich ELISA standard curve of MP02176-3, Mouse Timp2 Recombinant Matched Antibody Pair - PBS only. 85882-4-PBS was coated to a plate as the capture antibody and incubated with serial dilutions of standard Eg2960. 85882-2-PBS was HRP conjugated as the detection antibody. Range: 78.1-5000 pg/mL



Serum of sixteen mice was measured. The mouse Timp2 concentration of detected samples was determined to be 1,122.15 ng/mL with a range of 933.30 - 1,234.19 ng/mL



Mouse lung tissue (3 lungs in 1-2 mm pieces in 100 mL of medium) was cultured for 5 days in RPMI supplemented with 10% fetal bovine serum, 5  $\mu$  M  $\beta$ -mercaptoethanol, 2 mM L-glutamine, 100 U/mL penicillin, and 100  $\mu$  g/mL streptomycin sulfate. An aliquot of the cell culture supernate was removed, assayed for mouse Timp2, and measured 53.04 ng/mL