

CPLX1 Recombinant Matched Antibody Pair, PBS Only

Catalog Number: MP02175-1

Capture Antibody Information

Catalog Number: 85874-4-PBS	Clone ID: 250131C12	Conjugate: Unconjugated
Host: Rabbit	Reactivity: human	Full name: complexin 1
Isotype: IgG	GenBank: BC002471	Gene ID: 10815
Purification Method: Protein A purification	Immunogen Catalog Number: Ag0387	

Detection Antibody Information

Catalog Number: 85874-3-PBS	Clone ID: 250131B11	Conjugate: Unconjugated
Host: Rabbit	Reactivity: human	Full name: complexin 1
Isotype: IgG	GenBank: BC002471	Gene ID: 10815
Purification Method: Protein A purification	Immunogen Catalog Number: Ag0387	

Applications

Tested Applications: Cytometric bead array, Sandwich ELISA	Range: 3.125-200 ng/mL (Cytometric Bead Array) 0.313-20 ng/mL (Sandwich ELISA)	Recommended Dilutions: It is recommended that this reagent should be titrated in each testing system to obtain optimal results.
---	--	--

Product Information

MP02175-1 targets CPLX1 in immunoassays as a matched antibody pair. Validated in Cytometric bead array, Sandwich ELISA.

Capture antibody: CPLX1 Recombinant antibody, PBS Only (Capture) 85874-4-PBS (250131C12). 100 µg. Concentration 1 mg/mL.

Detection antibody: CPLX1 Recombinant antibody, PBS Only (Detector) 85874-3-PBS (250131B11). 100 µg. Concentration 1 mg/mL.

Unconjugated rabbit recombinant monoclonal antibody pair in PBS only storage buffer at a concentration of 1 mg/mL, ready for conjugation. Created using Proteintech's proprietary in-house recombinant technology. Recombinant production enables unrivalled batch-to-batch consistency, easy scale-up, and future security of supply.

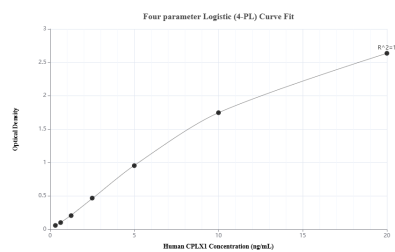
Matched antibody pairs are designed for use in a variety of assays and platforms that require matched antibody pairs.

Antibody use should be optimized for each application and assay.

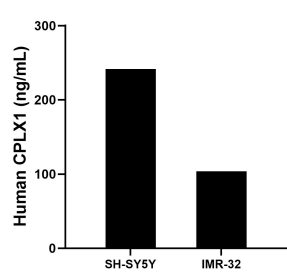
Storage

Storage:
Store at -80°C.
The product is shipped with ice packs. Upon receipt, store it immediately at -80°C
Storage buffer:
PBS only

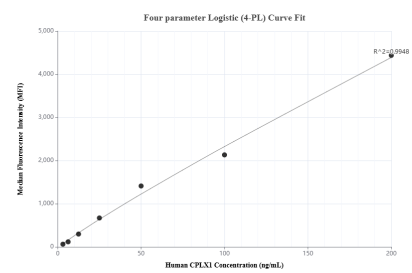
Selected Validation Data



Sandwich ELISA standard curve of MP02175-1, Human CPLX1 Recombinant Matched Antibody Pair - PBS only. 85874-4-PBS was coated to a plate as the capture antibody and incubated with serial dilutions of standard Ag0387. 85874-3-PBS was HRP conjugated as the detection antibody. Range: 0.313-20 ng/mL



The mean CPLX1 concentration was determined to be 241.51 ng/mL in SH-SY5Y cell extract based on a 3.2 mg/mL extract load and 103.92 ng/mL in IMR-32 cell extract based on a 1.7 mg/mL extract load.



Cytometric bead array standard curve of MP02175-1, CPLX1 Recombinant Matched Antibody Pair, PBS Only. Capture antibody: 85874-4-PBS. Detection antibody: 85874-3-PBS. Standard: Ag0387. Range: 3.125-200 ng/mL