

Mouse Beta-2-Microglobulin Recombinant Matched Antibody Pair, PBS Only

Catalog Number: **MP02174-3**

Capture Antibody Information

Catalog Number: 98442-2-PBS	Clone ID: 250172F11	Conjugate: Unconjugated
Host: Rabbit	Reactivity: mouse	Full name: beta-2 microglobulin
Isotype: IgG	GenBank: NM_009735.3	Gene ID: 12010
Purification Method: Protein A purification	Immunogen Catalog Number: Eg3086	

Detection Antibody Information

Catalog Number: 85871-5-PBS	Clone ID: 250172D4	Conjugate: Unconjugated
Host: Rabbit	Reactivity: mouse	Full name: beta-2 microglobulin
Isotype: IgG	GenBank: NM_009735.3	Gene ID: 12010
Purification Method: Protein A purification	Immunogen Catalog Number: Eg3086	

Applications

Tested Applications: Sandwich ELISA	Range: 23.4-1500 pg/mL (Sandwich ELISA)	Recommended Dilutions: It is recommended that this reagent should be titrated in each testing system to obtain optimal results.
--	--	--

Product Information

MP02174-3 targets Beta-2-Microglobulin in immunoassays as a matched antibody pair. Validated in Sandwich ELISA.

Capture antibody: Anti-Mouse B2m Rabbit Recombinant Antibody, PBS Only (Capture) 98442-2-PBS (250172F11). 100 µg. Concentration 1 mg/mL.

Detection antibody: Mouse B2m Recombinant antibody, PBS Only (Detector) 85871-5-PBS (250172D4). 100 µg. Concentration 1 mg/mL.

Unconjugated rabbit recombinant monoclonal antibody pair in PBS only storage buffer at a concentration of 1 mg/mL, ready for conjugation. Created using Proteintech's proprietary in-house recombinant technology. Recombinant production enables unrivalled batch-to-batch consistency, easy scale-up, and future security of supply.

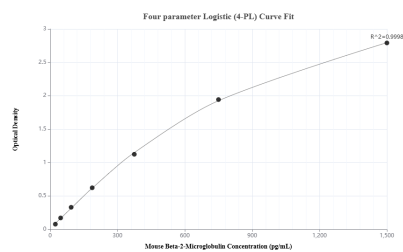
Matched antibody pairs are designed for use in a variety of assays and platforms that require matched antibody pairs.

Antibody use should be optimized for each application and assay.

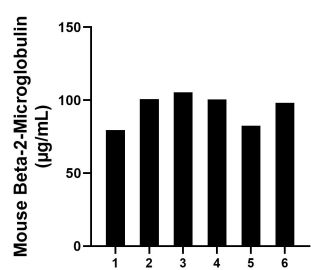
Storage

Storage:
Store at -80°C.
The product is shipped with ice packs. Upon receipt, store it immediately at -80°C
Storage buffer:
PBS only

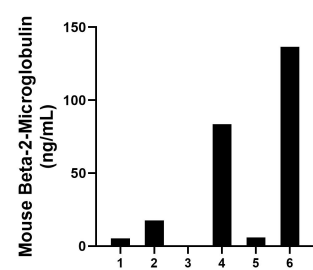
Selected Validation Data



Sandwich ELISA standard curve of MP02174-3, Mouse Beta-2-Microglobulin Recombinant Matched Antibody Pair - PBS only. 98442-2-PBS was coated to a plate as the capture antibody and incubated with serial dilutions of standard Eg3086. 85871-5-PBS was HRP conjugated as the detection antibody. Range: 23.438-1500 pg/mL



Serum of six mice was measured. The mouse Beta-2-Microglobulin concentration of detected samples was determined to be 94.41 µg/mL with a range of 79.57 - 105.38 µg/mL.



Urine of six mice was measured. The mouse Beta-2-Microglobulin concentration of detected samples was determined to be 49.78 ng/mL with a range of ND - 136.66 ng/mL.