

LGALS3BP Recombinant Matched Antibody Pair, PBS Only

Catalog Number: **MP02172-3**

Capture Antibody Information

Catalog Number: 85883-7-PBS	Clone ID: 250138C12	Conjugate: Unconjugated
Host: Rabbit	Reactivity: human	Full name: lectin, galactoside-binding, soluble, 3 binding protein
Isotype: IgG	GenBank: NM_005567	Gene ID: 3959
Purification Method: Protein A purification	Immunogen Catalog Number: Eg3302	

Detection Antibody Information

Catalog Number: 85883-6-PBS	Clone ID: 250138A7	Conjugate: Unconjugated
Host: Rabbit	Reactivity: human	Full name: lectin, galactoside-binding, soluble, 3 binding protein
Isotype: IgG	GenBank: NM_005567	Gene ID: 3959
Purification Method: Protein A purification	Immunogen Catalog Number: Eg3302	

Applications

Tested Applications: Sandwich ELISA	Range: 0.156-10 ng/mL (Sandwich ELISA)	Recommended Dilutions: It is recommended that this reagent should be titrated in each testing system to obtain optimal results.
---	--	---

Product Information

MP02172-3 targets LGALS3BP in immunoassays as a matched antibody pair. Validated in Sandwich ELISA.

Capture antibody: LGALS3BP Recombinant antibody, PBS Only (Capture) 85883-7-PBS (250138C12). 100 µg. Concentration 1 mg/mL.

Detection antibody: LGALS3BP Recombinant antibody, PBS Only (Detector) 85883-6-PBS (250138A7). 100 µg. Concentration 1 mg/mL.

Unconjugated rabbit recombinant monoclonal antibody pair in PBS only storage buffer at a concentration of 1 mg/mL, ready for conjugation. Created using Proteintech's proprietary in-house recombinant technology. Recombinant production enables unrivalled batch-to-batch consistency, easy scale-up, and future security of supply.

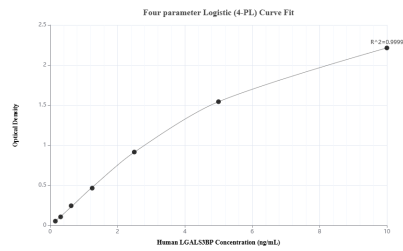
Matched antibody pairs are designed for use in a variety of assays and platforms that require matched antibody pairs.

Antibody use should be optimized for each application and assay.

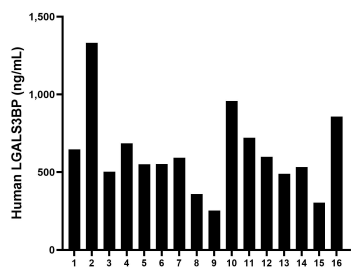
Storage

Storage:
Store at -80°C.
The product is shipped with ice packs. Upon receipt, store it immediately at -80°C
Storage buffer:
PBS only

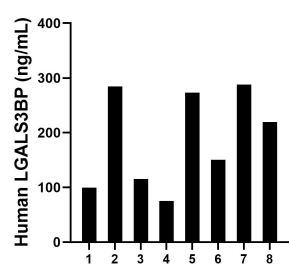
Selected Validation Data



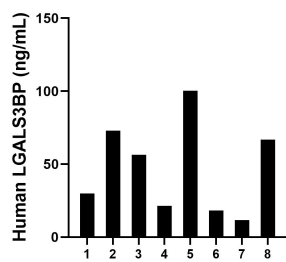
Sandwich ELISA standard curve of MP02172-3, HumanLGALS3BP Recombinant Matched Antibody Pair - PBS only. 85883-7-PBS was coated to a plate as the capture antibody and incubated with serial dilutions of standard Eg3302. 85883-6-PBS was HRP conjugated as the detection antibody. Range: 0.156-10 ng/mL



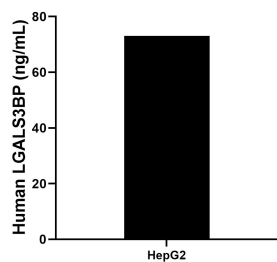
Serum of sixteen individual healthy human donors was measured. The human LGALS3BP concentration of detected samples was determined to be 620.97 ng/mL with a range of 252.78 - 1,331.49 ng/mL



Sliva of eight individual healthy human donors was measured. The human LGALS3BP concentration of detected samples was determined to be 188.02 ng/mL with a range of 74.95 - 287.71 ng/mL



Urine of eight individual healthy human donors was measured. The human LGALS3BP concentration of detected samples was determined to be 47.18 ng/mL with a range of 11.64 - 100.32 ng/mL



HepG2 (human hepatocellular carcinoma cells) were cultured in DMEM supplemented with 10% fetal bovine serum, 2.5 mM L-glutamine, 100 U/mL penicillin, and 100 µg/mL streptomycin sulfate. An aliquot of the cell culture supernatants was removed, assayed for human LGALS3BP, and measured 73.08 ng/mL