

PAEP/Glycodelin Recombinant Matched Antibody Pair, PBS Only

Catalog Number: **MP02170-1**

Capture Antibody Information

Catalog Number:
85856-3-PBS
Host:
Rabbit
Isotype:
IgG
Purification Method:
Protein A purification

Clone ID:
250206D2
Reactivity:
human
GenBank:
NM_002571.4

Conjugate:
Unconjugated
Full name:
progesterone-associated endometrial
protein
Gene ID:
5047

Detection Antibody Information

Catalog Number:
85856-2-PBS
Host:
Rabbit
Isotype:
IgG
Purification Method:
Protein A purification

Clone ID:
250206H6
Reactivity:
human
GenBank:
NM_002571.4

Conjugate:
Unconjugated
Full name:
progesterone-associated endometrial
protein
Gene ID:
5047

Applications

Tested Applications:
Cytometric bead array

Range:
0.625-40 ng/mL (Cytometric Bead
Array)

Recommended Dilutions:
It is recommended that this reagent
should be titrated in each testing
system to obtain optimal results.

Product Information

MP02170-1 targets PAEP/Glycodelin in immunoassays as a matched antibody pair. Validated in Cytometric bead array.

Capture antibody: PAEP/Glycodelin Recombinant antibody, PBS Only (Capture) 85856-3-PBS (250206D2). 100 µg. Concentration 1 mg/mL.

Detection antibody: PAEP/Glycodelin Recombinant antibody, PBS Only (Detector) 85856-2-PBS (250206H6). 100 µg. Concentration 1 mg/mL.

Unconjugated rabbit recombinant monoclonal antibody pair in PBS only storage buffer at a concentration of 1 mg/mL, ready for conjugation. Created using Proteintech's proprietary in-house recombinant technology. Recombinant production enables unrivalled batch-to-batch consistency, easy scale-up, and future security of supply.

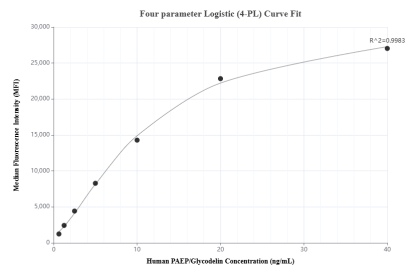
Matched antibody pairs are designed for use in a variety of assays and platforms that require matched antibody pairs.

Antibody use should be optimized for each application and assay.

Storage

Storage:
Store at -80°C.
The product is shipped with ice packs. Upon receipt, store it immediately at -80°C
Storage buffer:
PBS only

Selected Validation Data



Cytometric bead array standard curve of MP02170-1, PAEP/Glycodelin Recombinant Matched Antibody Pair, PBS Only. Capture antibody: 85856-3-PBS. Detection antibody: 85856-2-PBS. Standard: Eg3037. Range: 0.625-40 ng/mL