

Parvalbumin Recombinant Matched Antibody Pair, PBS Only

Catalog Number: **MP02167-1**

Capture Antibody Information

Catalog Number:
85819-3-PBS

Host:
Rabbit

Isotype:
IgG

Purification Method:
Protein A purification

Clone ID:
250158A11

Reactivity:
human

GenBank:
NM_002854

Immunogen Catalog Number:
Ag30189

Conjugate:
Unconjugated

Full name:
parvalbumin

Gene ID:
5816

Detection Antibody Information

Catalog Number:
85819-2-PBS

Host:
Rabbit

Isotype:
IgG

Purification Method:
Protein A purification

Clone ID:
250158B10

Reactivity:
human

GenBank:
NM_002854

Immunogen Catalog Number:
Ag30189

Conjugate:
Unconjugated

Full name:
parvalbumin

Gene ID:
5816

Applications

Tested Applications:
Cytometric bead array, Sandwich ELISA

Range:
0.781-25 ng/mL (Cytometric Bead Array)
31.25-2000 pg/mL (Sandwich ELISA)

Recommended Dilutions:
It is recommended that this reagent should be titrated in each testing system to obtain optimal results.

Product Information

MP02167-1 targets Parvalbumin in immunoassays as a matched antibody pair. Validated in Cytometric bead array, Sandwich ELISA.

Capture antibody: PVALB Recombinant antibody, PBS Only (Capture) 85819-3-PBS (250158A11). 100 µg. Concentration 1 mg/mL.

Detection antibody: PVALB Recombinant antibody, PBS Only (Detector) 85819-2-PBS (250158B10). 100 µg. Concentration 1 mg/mL.

Unconjugated rabbit recombinant monoclonal antibody pair in PBS only storage buffer at a concentration of 1 mg/mL, ready for conjugation. Created using Proteintech's proprietary in-house recombinant technology. Recombinant production enables unrivalled batch-to-batch consistency, easy scale-up, and future security of supply.

Matched antibody pairs are designed for use in a variety of assays and platforms that require matched antibody pairs.

Antibody use should be optimized for each application and assay.

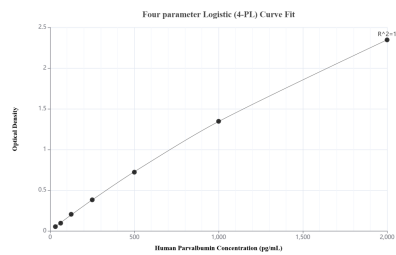
Storage

Storage:
Store at -80°C.

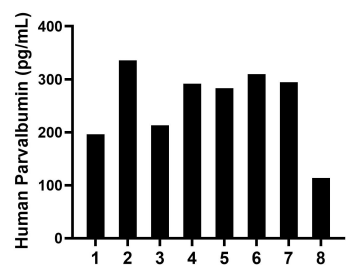
The product is shipped with ice packs. Upon receipt, store it immediately at -80°C

Storage buffer:
PBS only

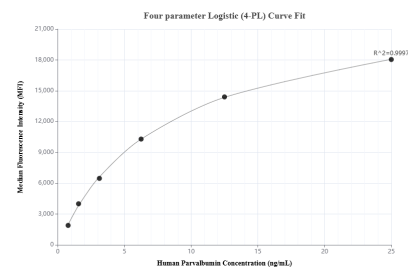
Selected Validation Data



Sandwich ELISA standard curve of MP02167-1, Human Parvalbumin Recombinant Matched Antibody Pair - PBS only. 85819-3-PBS was coated to a plate as the capture antibody and incubated with serial dilutions of standard Ag30189. 85819-2-PBS was HRP conjugated as the detection antibody. Range: 31.25-2000 pg/mL



Serum of eight individual healthy human donors was measured. The Parvalbumin concentration of detected samples was determined to be 254.8 pg/mL with a range of 113.7-335.8 pg/mL



Cytometric bead array standard curve of MP02167-1, Parvalbumin Recombinant Matched Antibody Pair, PBS Only. Capture antibody: 85819-3-PBS. Detection antibody: 85819-2-PBS. Standard: Ag30189. Range: 0.781-25 ng/mL