

MOV10 Recombinant Matched Antibody Pair, PBS Only

Catalog Number: **MP02162-1**

Capture Antibody Information

Catalog Number:
85818-3-PBS
Host:
Rabbit
Isotype:
IgG
Purification Method:
Protein A purification

Clone ID:
250130C9
Reactivity:
human
GenBank:
BC002548
Immunogen Catalog Number:
Ag0384

Conjugate:
Unconjugated
Full name:
Mov10, Moloney leukemia virus 10, homolog (mouse)
Gene ID:
4343

Detection Antibody Information

Catalog Number:
85818-1-PBS
Host:
Rabbit
Isotype:
IgG
Purification Method:
Protein A purification

Clone ID:
250130A4
Reactivity:
human
GenBank:
BC002548
Immunogen Catalog Number:
Ag0384

Conjugate:
Unconjugated
Full name:
Mov10, Moloney leukemia virus 10, homolog (mouse)
Gene ID:
4343

Applications

Tested Applications:
Cytometric bead array, Sandwich ELISA

Range:
0.781-100 ng/mL (Cytometric Bead Array)
0.313-20 ng/mL (Sandwich ELISA)

Recommended Dilutions:
It is recommended that this reagent should be titrated in each testing system to obtain optimal results.

Product Information

MP02162-1 targets MOV10 in immunoassays as a matched antibody pair. Validated in Cytometric bead array, Sandwich ELISA.

Capture antibody: MOV10 Recombinant antibody, PBS Only (Capture) 85818-3-PBS (250130C9). 100 µg. Concentration 1 mg/mL.

Detection antibody: MOV10 Recombinant antibody, PBS Only (Detector) 85818-1-PBS (250130A4). 100 µg. Concentration 1 mg/mL.

Unconjugated rabbit recombinant monoclonal antibody pair in PBS only storage buffer at a concentration of 1 mg/mL, ready for conjugation. Created using Proteintech's proprietary in-house recombinant technology. Recombinant production enables unrivalled batch-to-batch consistency, easy scale-up, and future security of supply.

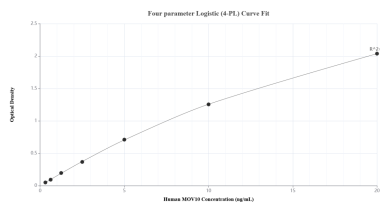
Matched antibody pairs are designed for use in a variety of assays and platforms that require matched antibody pairs.

Antibody use should be optimized for each application and assay.

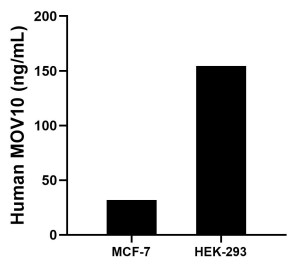
Storage

Storage:
Store at -80°C.
The product is shipped with ice packs. Upon receipt, store it immediately at -80°C
Storage buffer:
PBS only

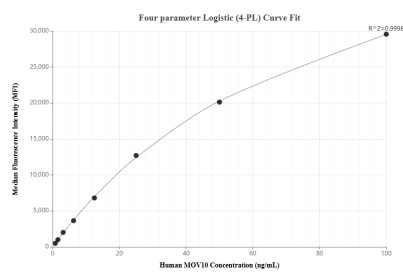
Selected Validation Data



Sandwich ELISA standard curve of MP02162-1, Human MOV10 Recombinant Matched Antibody Pair - PBS only. 85818-3-PBS was coated to a plate as the capture antibody and incubated with serial dilutions of standard Ag0384. 85818-1-PBS was HRP conjugated as the detection antibody. Range: 0.313-20 ng/mL



The mean MOV10 concentration was determined to be 31.80 ng/mL in MCF-7 cell extract based on a 1.20 mg/mL extract load and 154.30 ng/mL in HEK-293 cell extract based on a 2.20 mg/mL extract load.



Cytometric bead array standard curve of MP02162-1, MOV10 Recombinant Matched Antibody Pair, PBS Only. Capture antibody: 85818-3-PBS. Detection antibody: 85818-1-PBS. Standard: Ag0384. Range: 0.781-100 ng/mL