

OMD Recombinant Matched Antibody Pair, PBS Only

Catalog Number: MP02156-1

Capture Antibody Information

Catalog Number:
85850-3-PBS
Host:
Rabbit
Isotype:
IgG
Purification Method:
Protein A purification

Clone ID:
250236A11
Reactivity:
human
GenBank:
NM_005014.2
Immunogen Catalog Number:
Eg2816

Conjugate:
Unconjugated
Full name:
osteomodulin
Gene ID:
4958

Detection Antibody Information

Catalog Number:
85850-2-PBS
Host:
Rabbit
Isotype:
IgG
Purification Method:
Protein A purification

Clone ID:
250236D7
Reactivity:
human
GenBank:
NM_005014.2
Immunogen Catalog Number:
Eg2816

Conjugate:
Unconjugated
Full name:
osteomodulin
Gene ID:
4958

Applications

Tested Applications:
Cytometric bead array, Sandwich
ELISA

Range:
0.313-40 ng/mL (Cytometric Bead
Array)
0.313-20 ng/mL (Sandwich ELISA)

Recommended Dilutions:
It is recommended that this reagent
should be titrated in each testing
system to obtain optimal results.

Product Information

MP02156-1 targets OMD in immunoassays as a matched antibody pair. Validated in Cytometric bead array, Sandwich ELISA.

Capture antibody: OMD Recombinant antibody, PBS Only (Capture) 85850-3-PBS (250236A11). 100 µg. Concentration 1 mg/mL.

Detection antibody: OMD Recombinant antibody, PBS Only (Detector) 85850-2-PBS (250236D7). 100 µg. Concentration 1 mg/mL.

Unconjugated rabbit recombinant monoclonal antibody pair in PBS only storage buffer at a concentration of 1 mg/mL, ready for conjugation. Created using Proteintech's proprietary in-house recombinant technology. Recombinant production enables unrivalled batch-to-batch consistency, easy scale-up, and future security of supply.

Matched antibody pairs are designed for use in a variety of assays and platforms that require matched antibody pairs.

Antibody use should be optimized for each application and assay.

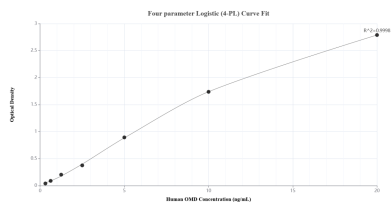
Storage

Storage:
Store at -80°C.

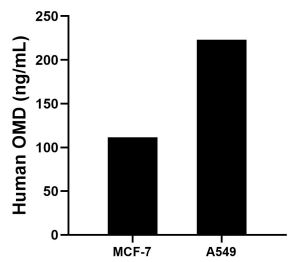
The product is shipped with ice packs. Upon receipt, store it immediately at -80°C

Storage buffer:
PBS only

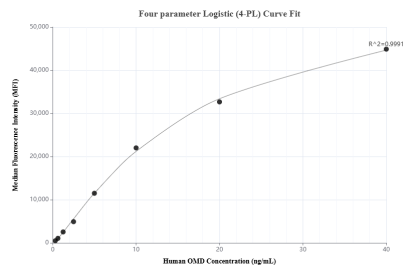
Selected Validation Data



Sandwich ELISA standard curve of MP02156-1, Human OMD Recombinant Matched Antibody Pair - PBS only. 85850-3-PBS was coated to a plate as the capture antibody and incubated with serial dilutions of standard Eg2816. 85850-2-PBS was HRP conjugated as the detection antibody. Range: 0.313-20 ng/mL



The mean OMD concentration was determined to be 111.34 ng/mL in MCF-7 cell extract based on a 2.40 mg/mL extract load and 223.17 ng/mL in A549 cell extract based on a 2.40 mg/mL extract load.



Cytometric bead array standard curve of MP02156-1, OMD Recombinant Matched Antibody Pair, PBS Only. Capture antibody: 85850-3-PBS. Detection antibody: 85850-2-PBS. Standard: Eg2816. Range: 0.313-40 ng/mL