

# CLIC1 Recombinant Matched Antibody Pair, PBS Only

Catalog Number: **MP02147-3**

## Capture Antibody Information

Catalog Number: 85831-5-PBS	Clone ID: 250143D10	Conjugate: Unconjugated
Host: Rabbit	Reactivity: human	Full name: chloride intracellular channel 1
Isotype: IgG	GenBank: BC064527	Gene ID: 1192
Purification Method: Protein A purification	Immunogen Catalog Number: Ag6049	

## Detection Antibody Information

Catalog Number: 85831-2-PBS	Clone ID: 250143C6	Conjugate: Unconjugated
Host: Rabbit	Reactivity: human	Full name: chloride intracellular channel 1
Isotype: IgG	GenBank: BC064527	Gene ID: 1192
Purification Method: Protein A purification	Immunogen Catalog Number: Ag6049	

## Applications

Tested Applications: Sandwich ELISA	Range: 0.781-50 ng/mL (Sandwich ELISA)	Recommended Dilutions: It is recommended that this reagent should be titrated in each testing system to obtain optimal results.
--	---	--

## Product Information

MP02147-3 targets CLIC1 in immunoassays as a matched antibody pair. Validated in Sandwich ELISA.

Capture antibody: CLIC1 Recombinant antibody, PBS Only (Capture) 85831-5-PBS (250143D10). 100 µg. Concentration 1 mg/mL.

Detection antibody: CLIC1 Recombinant antibody, PBS Only (Detector) 85831-2-PBS (250143C6). 100 µg. Concentration 1 mg/mL.

Unconjugated rabbit recombinant monoclonal antibody pair in PBS only storage buffer at a concentration of 1 mg/mL, ready for conjugation. Created using Proteintech's proprietary in-house recombinant technology. Recombinant production enables unrivalled batch-to-batch consistency, easy scale-up, and future security of supply.

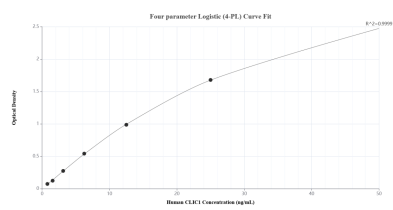
Matched antibody pairs are designed for use in a variety of assays and platforms that require matched antibody pairs.

Antibody use should be optimized for each application and assay.

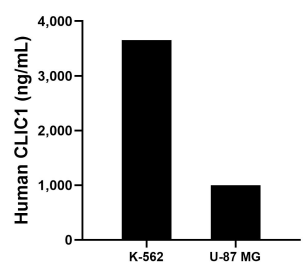
## Storage

Storage:  
Store at -80°C.  
**The product is shipped with ice packs. Upon receipt, store it immediately at -80°C**  
Storage buffer:  
PBS only

## Selected Validation Data



Sandwich ELISA standard curve of MP02147-3, Human CLIC1 Recombinant Matched Antibody Pair - PBS only. 85831-5-PBS was coated to a plate as the capture antibody and incubated with serial dilutions of standard Ag6049. 85831-2-PBS was HRP conjugated as the detection antibody. Range: 0.781-50 ng/mL



The mean CLIC1 concentration was determined to be 3,651.74 ng/mL in K-562 cell extract based on a 2.40 mg/mL extract load and 998.13 ng/mL in U-87 MG cell extract based on a 2.00 mg/mL extract load.