

MEF2D Recombinant Matched Antibody Pair, PBS Only

Catalog Number: **MP02136-3**

Capture Antibody Information

Catalog Number: 85801-3-PBS	Clone ID: 250068H2	Conjugate: Unconjugated
Host: Rabbit	Reactivity: human	Full name: myocyte enhancer factor 2D
Isotype: IgG	GenBank: BC040949	Gene ID: 4209
Purification Method: Protein A purification	Immunogen Catalog Number: Ag5700	

Detection Antibody Information

Catalog Number: 85801-1-PBS	Clone ID: 250068A6	Conjugate: Unconjugated
Host: Rabbit	Reactivity: human	Full name: myocyte enhancer factor 2D
Isotype: IgG	GenBank: BC040949	Gene ID: 4209
Purification Method: Protein A purification	Immunogen Catalog Number: Ag5700	

Applications

Tested Applications: Sandwich ELISA	Range: 0.313-20 ng/mL (Sandwich ELISA)	Recommended Dilutions: It is recommended that this reagent should be titrated in each testing system to obtain optimal results.
-----------------------------------------------	--------------------------------------------------	-------------------------------------------------------------------------------------------------------------------------------------------

Product Information

MP02136-3 targets MEF2D in immunoassays as a matched antibody pair. Validated in Sandwich ELISA.

Capture antibody: MEF2D Recombinant antibody, PBS Only (Capture) 85801-3-PBS (250068H2). 100 µg. Concentration 1 mg/mL.

Detection antibody: MEF2D Recombinant antibody, PBS Only (Detector) 85801-1-PBS (250068A6). 100 µg. Concentration 1 mg/mL.

Unconjugated rabbit recombinant monoclonal antibody pair in PBS only storage buffer at a concentration of 1 mg/mL, ready for conjugation. Created using Proteintech's proprietary in-house recombinant technology. Recombinant production enables unrivalled batch-to-batch consistency, easy scale-up, and future security of supply.

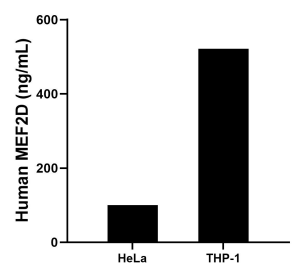
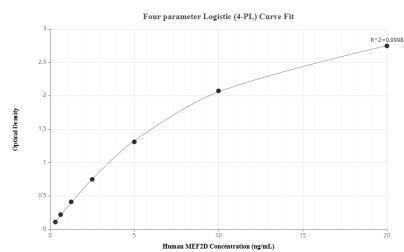
Matched antibody pairs are designed for use in a variety of assays and platforms that require matched antibody pairs.

Antibody use should be optimized for each application and assay.

Storage

Storage:
Store at -80°C.
The product is shipped with ice packs. Upon receipt, store it immediately at -80°C
Storage buffer:
PBS only

Selected Validation Data



Sandwich ELISA standard curve of MP02136-3, Human MEF2D Recombinant Matched Antibody Pair - PBS only. 85801-3-PBS was coated to a plate as the capture antibody and incubated with serial dilutions of standard Ag5700. 85801-1-PBS was HRP conjugated as the detection antibody. Range: 0.313-20 ng/mL

The mean MEF2D concentration was determined to be 100.38 ng/mL in HeLa cell extract based on a 1.5 mg/mL extract load and 521.78 ng/mL in THP-1 cell extract based on a 1.5 mg/mL extract load.