

hCG Beta Recombinant Matched Antibody Pair, PBS Only

Catalog Number: **MP02128-3**

Capture Antibody Information

Catalog Number:
85800-6-PBS
Host:
Rabbit
Isotype:
IgG
Purification Method:
Protein A purification

Clone ID:
250118H2
Reactivity:
human
GenBank:
Immunogen Catalog Number:
Eg3378

Conjugate:
Unconjugated
Full name:
CG beta
Gene ID:
1082

Detection Antibody Information

Catalog Number:
85800-5-PBS
Host:
Rabbit
Isotype:
IgG
Purification Method:
Protein A purification

Clone ID:
250118G2
Reactivity:
human
GenBank:
Immunogen Catalog Number:
Eg3378

Conjugate:
Unconjugated
Full name:
CG beta
Gene ID:
1082

Applications

Tested Applications:
Sandwich ELISA

Range:
78.1-5000 pg/mL (Sandwich ELISA)

Recommended Dilutions:
It is recommended that this reagent should be titrated in each testing system to obtain optimal results.

Product Information

MP02128-3 targets hCG Beta in immunoassays as a matched antibody pair. Validated in Sandwich ELISA.

Capture antibody: hCG Beta Recombinant antibody, PBS Only (Capture) 85800-6-PBS (250118H2). 100 µg. Concentration 1 mg/mL.

Detection antibody: hCG Beta Recombinant antibody, PBS Only (Detector) 85800-5-PBS (250118G2). 100 µg. Concentration 1 mg/mL.

Unconjugated rabbit recombinant monoclonal antibody pair in PBS only storage buffer at a concentration of 1 mg/mL, ready for conjugation. Created using Proteintech's proprietary in-house recombinant technology. Recombinant production enables unrivalled batch-to-batch consistency, easy scale-up, and future security of supply.

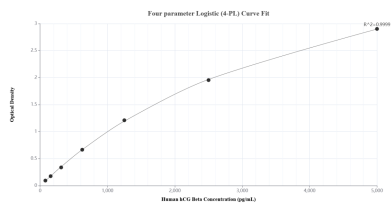
Matched antibody pairs are designed for use in a variety of assays and platforms that require matched antibody pairs.

Antibody use should be optimized for each application and assay.

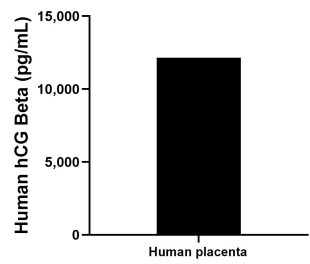
Storage

Storage:
Store at -80°C.
The product is shipped with ice packs. Upon receipt, store it immediately at -80°C
Storage buffer:
PBS only

Selected Validation Data



Sandwich ELISA standard curve of MP02128-3, Human hCG Beta Recombinant Matched Antibody Pair - PBS only. 85800-6-PBS was coated to a plate as the capture antibody and incubated with serial dilutions of standard Eg3378. 85800-5-PBS was HRP conjugated as the detection antibody. Range: 78.1-5000 pg/mL.



The mean hCG Beta concentration was determined to be 12,153.3 pg/mL in human placenta extract based on a 3.2 mg/mL extract load.