

# BCKDHA Recombinant Matched Antibody Pair, PBS Only

Catalog Number: **MP02125-3**

## Capture Antibody Information

<b>Catalog Number:</b> 85799-1-PBS	<b>Clone ID:</b> 250051H2	<b>Conjugate:</b> Unconjugated
<b>Host:</b> Rabbit	<b>Reactivity:</b> human	<b>Full name:</b> branched chain keto acid dehydrogenase E1, alpha polypeptide
<b>Isotype:</b> IgG	<b>GenBank:</b> BC008933	<b>Gene ID:</b> 593
<b>Purification Method:</b> Protein A purification	<b>Immunogen Catalog Number:</b> Ag32613	

## Detection Antibody Information

<b>Catalog Number:</b> 85799-2-PBS	<b>Clone ID:</b> 250051G12	<b>Conjugate:</b> Unconjugated
<b>Host:</b> Rabbit	<b>Reactivity:</b> human	<b>Full name:</b> branched chain keto acid dehydrogenase E1, alpha polypeptide
<b>Isotype:</b> IgG	<b>GenBank:</b> BC008933	<b>Gene ID:</b> 593
<b>Purification Method:</b> Protein A purification	<b>Immunogen Catalog Number:</b> Ag32613	

## Applications

<b>Tested Applications:</b> Sandwich ELISA	<b>Range:</b> 78.1-5000 pg/mL (Sandwich ELISA)	<b>Recommended Dilutions:</b> It is recommended that this reagent should be titrated in each testing system to obtain optimal results.
---	---	---

## Product Information

MP02125-3 targets BCKDHA in immunoassays as a matched antibody pair. Validated in Sandwich ELISA.

Capture antibody: BCKDHA Recombinant antibody, PBS Only (Capture/Detector) 85799-1-PBS (250051H2). 100 µg. Concentration 1 mg/mL.

Detection antibody: BCKDHA Recombinant antibody, PBS Only (Detector) 85799-2-PBS (250051G12). 100 µg. Concentration 1 mg/mL.

Unconjugated rabbit recombinant monoclonal antibody pair in PBS only storage buffer at a concentration of 1 mg/mL, ready for conjugation. Created using Proteintech's proprietary in-house recombinant technology. Recombinant production enables unrivalled batch-to-batch consistency, easy scale-up, and future security of supply.

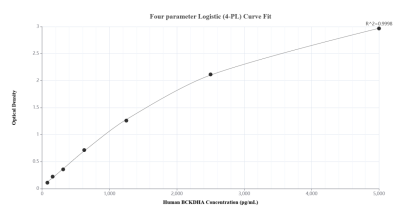
Matched antibody pairs are designed for use in a variety of assays and platforms that require matched antibody pairs.

Antibody use should be optimized for each application and assay.

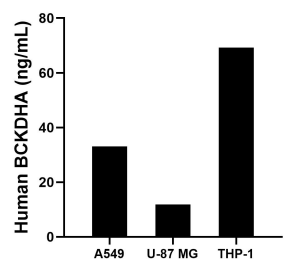
## Storage

**Storage:**  
Store at -80°C.  
**The product is shipped with ice packs. Upon receipt, store it immediately at -80°C**  
**Storage buffer:**  
PBS only

## Selected Validation Data



Sandwich ELISA standard curve of MP02125-3, Human BCKDHA Recombinant Matched Antibody Pair - PBS only. 85799-1-PBS was coated to a plate as the capture antibody and incubated with serial dilutions of standard Ag32613. 85799-2-PBS was HRP conjugated as the detection antibody. Range: 78.1-5000 pg/mL.



The mean BCKDHA concentration was determined to be 33.1 ng/mL in A549 cell extract based on a 1.3 mg/mL extract load, 11.9 ng/mL in U-87 MG cell extract based on a 2.0 mg/mL extract load and 69.3 ng/mL in THP-1 cell extract based on a 1.5 mg/mL extract load.