

DCC Recombinant Matched Antibody Pair, PBS Only

Catalog Number: **MP02122-3**

Capture Antibody Information

Catalog Number:
85787-4-PBS
Host:
Rabbit
Isotype:
IgG
Purification Method:
Protein A purification

Clone ID:
250085A11
Reactivity:
human
GenBank:
NM_005215.3
Immunogen Catalog Number:
Eg2937

Conjugate:
Unconjugated
Full name:
deleted in colorectal carcinoma
Gene ID:
1630

Detection Antibody Information

Catalog Number:
85787-2-PBS
Host:
Rabbit
Isotype:
IgG
Purification Method:
Protein A purification

Clone ID:
250085G2
Reactivity:
human
GenBank:
NM_005215.3
Immunogen Catalog Number:
Eg2937

Conjugate:
Unconjugated
Full name:
deleted in colorectal carcinoma
Gene ID:
1630

Applications

Tested Applications:
Sandwich ELISA

Range:
0.313-20 ng/mL (Sandwich ELISA)

Recommended Dilutions:
It is recommended that this reagent should be titrated in each testing system to obtain optimal results.

Product Information

MP02122-3 targets DCC in immunoassays as a matched antibody pair. Validated in Sandwich ELISA.

Capture antibody: DCC Recombinant antibody, PBS Only (Capture) 85787-4-PBS (250085A11). 100 µg. Concentration 1 mg/mL.

Detection antibody: DCC Recombinant antibody, PBS Only (Capture/Detector) 85787-2-PBS (250085G2). 100 µg. Concentration 1 mg/mL.

Unconjugated rabbit recombinant monoclonal antibody pair in PBS only storage buffer at a concentration of 1 mg/mL, ready for conjugation. Created using Proteintech's proprietary in-house recombinant technology. Recombinant production enables unrivalled batch-to-batch consistency, easy scale-up, and future security of supply.

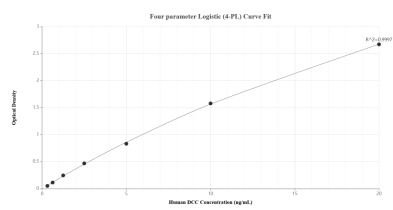
Matched antibody pairs are designed for use in a variety of assays and platforms that require matched antibody pairs.

Antibody use should be optimized for each application and assay.

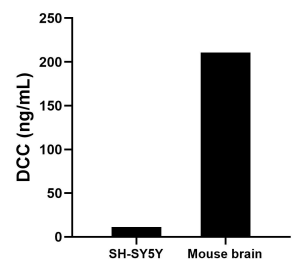
Storage

Storage:
Store at -80°C.
The product is shipped with ice packs. Upon receipt, store it immediately at -80°C
Storage buffer:
PBS only

Selected Validation Data



Sandwich ELISA standard curve of MP02122-3, Human DCC Recombinant Matched Antibody Pair - PBS only. 85787-4-PBS was coated to a plate as the capture antibody and incubated with serial dilutions of standard Eg2937. 85787-2-PBS was HRP conjugated as the detection antibody. Range: 0.313-20 ng/mL



The mean DCC concentration was determined to be 11.21 ng/mL in SH-SY5Y cell extract based on a 1.00 mg/mL extract load and 210.63 ng/mL in mouse brain tissue extract based on a 6.60 mg/mL extract load.