

Kallikrein 10 Recombinant Matched Antibody Pair, PBS Only

Catalog Number: **MP02112-3**

Capture Antibody Information

Catalog Number: 85741-4-PBS	Clone ID: 242746F1	Conjugate: Unconjugated
Host: Rabbit	Reactivity: human	Full name: kallikrein-related peptidase 10
Isotype: IgG	GenBank: NM_002776.4	Gene ID: 5655
Purification Method: Protein A purification	Immunogen Catalog Number: Eg3132	

Detection Antibody Information

Catalog Number: 85741-6-PBS	Clone ID: 242746E2	Conjugate: Unconjugated
Host: Rabbit	Reactivity: human	Full name: kallikrein-related peptidase 10
Isotype: IgG	GenBank: NM_002776.4	Gene ID: 5655
Purification Method: Protein A purification	Immunogen Catalog Number: Eg3132	

Applications

Tested Applications: Sandwich ELISA	Range: 39.1-2500 pg/mL (Sandwich ELISA)	Recommended Dilutions: It is recommended that this reagent should be titrated in each testing system to obtain optimal results.
---	---	---

Product Information

MP02112-3 targets Kallikrein 10 in immunoassays as a matched antibody pair. Validated in Sandwich ELISA.

Capture antibody: KLK10 Recombinant antibody, PBS Only (Capture) 85741-4-PBS (242746F1). 100 µg. Concentration 1 mg/mL.

Detection antibody: KLK10 Recombinant antibody, PBS Only (Detector) 85741-6-PBS (242746E2). 100 µg. Concentration 1 mg/mL.

Unconjugated rabbit recombinant monoclonal antibody pair in PBS only storage buffer at a concentration of 1 mg/mL, ready for conjugation. Created using Proteintech's proprietary in-house recombinant technology. Recombinant production enables unrivalled batch-to-batch consistency, easy scale-up, and future security of supply.

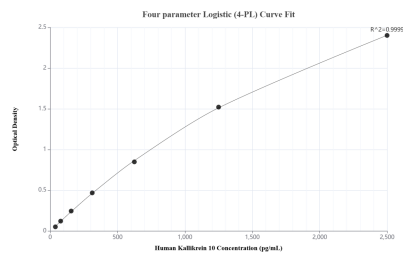
Matched antibody pairs are designed for use in a variety of assays and platforms that require matched antibody pairs.

Antibody use should be optimized for each application and assay.

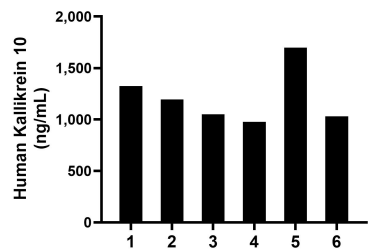
Storage

Storage:
Store at -80°C.
The product is shipped with ice packs. Upon receipt, store it immediately at -80°C
Storage buffer:
PBS only

Selected Validation Data



Sandwich ELISA standard curve of MP02112-3, Human Kallikrein 10 Recombinant Matched Antibody Pair - PBS only. 85741-4-PBS was coated to a plate as the capture antibody and incubated with serial dilutions of standard Eg3132. 85741-6-PBS was HRP conjugated as the detection antibody. Range: 39.1-2500 pg/mL.



Serum of six individual healthy human donors was measured. The Kallikrein 10 concentration of detected samples was determined to be 1,212.5 pg/mL with a range of 977.3-1,697.0 pg/mL.