

DDX18 Recombinant Matched Antibody Pair, PBS Only

Catalog Number: **MP02107-2**

Capture Antibody Information

Catalog Number: 85789-2-PBS	Clone ID: 250053A4	Conjugate: Unconjugated
Host: Rabbit	Reactivity: human	Full name: DEAD (Asp-Glu-Ala-Asp) box polypeptide 18
Isotype: IgG	GenBank: BC001238	Gene ID: 8886
Purification Method: Protein A purification	Immunogen Catalog Number: Ag27457	

Detection Antibody Information

Catalog Number: 85789-4-PBS	Clone ID: 250053F11	Conjugate: Unconjugated
Host: Rabbit	Reactivity: human	Full name: DEAD (Asp-Glu-Ala-Asp) box polypeptide 18
Isotype: IgG	GenBank: BC001238	Gene ID: 8886
Purification Method: Protein A purification	Immunogen Catalog Number: Ag27457	

Applications

Tested Applications: Sandwich ELISA	Range: 39.1-2500 pg/mL (Sandwich ELISA)	Recommended Dilutions: It is recommended that this reagent should be titrated in each testing system to obtain optimal results.
---	---	---

Product Information

MP02107-2 targets DDX18 in immunoassays as a matched antibody pair. Validated in Sandwich ELISA.

Capture antibody: DDX18 Recombinant antibody, PBS Only (Capture) 85789-2-PBS (250053A4). 100 µg. Concentration 1 mg/mL.

Detection antibody: DDX18 Recombinant antibody, PBS Only (Detector) 85789-4-PBS (250053F11). 100 µg. Concentration 1 mg/mL.

Unconjugated rabbit recombinant monoclonal antibody pair in PBS only storage buffer at a concentration of 1 mg/mL, ready for conjugation. Created using Proteintech's proprietary in-house recombinant technology. Recombinant production enables unrivalled batch-to-batch consistency, easy scale-up, and future security of supply.

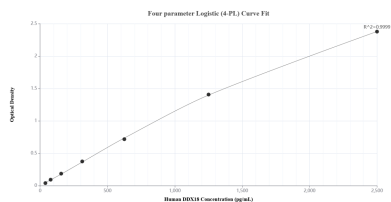
Matched antibody pairs are designed for use in a variety of assays and platforms that require matched antibody pairs.

Antibody use should be optimized for each application and assay.

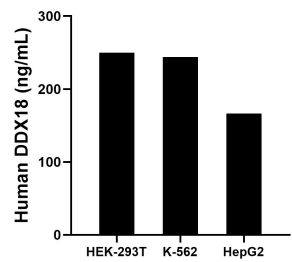
Storage

Storage:
Store at -80°C.
The product is shipped with ice packs. Upon receipt, store it immediately at -80°C
Storage buffer:
PBS only

Selected Validation Data



Sandwich ELISA standard curve of MP02107-2, Human DDX18 Recombinant Matched Antibody Pair - PBS only. 85789-2-PBS was coated to a plate as the capture antibody and incubated with serial dilutions of standard Ag27457. 85789-4-PBS was HRP conjugated as the detection antibody. Range: 39.1-2500 pg/mL.



The mean DDX18 concentration was determined to be 249.8 ng/mL in HEK-293T cell extract based on a 2.8 mg/mL extract load, 244.1 ng/mL in K-562 cell extract based on a 2.5 mg/mL extract load and 166.4 ng/mL in HepG2 cell extract based on a 1.8 mg/mL extract load.