

RLBP1 Recombinant Matched Antibody Pair, PBS Only

Catalog Number: **MP02104-2**

Capture Antibody Information

Catalog Number: 85697-4-PBS	Clone ID: 242989A1	Conjugate: Unconjugated
Host: Rabbit	Reactivity: human	Full name: retinaldehyde binding protein 1
Isotype: IgG	GenBank: BC004199	Gene ID: 6017
Purification Method: Protein A purification	Immunogen Catalog Number: Ag7602	

Detection Antibody Information

Catalog Number: 85697-2-PBS	Clone ID: 242989B11	Conjugate: Unconjugated
Host: Rabbit	Reactivity: human	Full name: retinaldehyde binding protein 1
Isotype: IgG	GenBank: BC004199	Gene ID: 6017
Purification Method: Protein A purification	Immunogen Catalog Number: Ag7602	

Applications

Tested Applications: Cytometric bead array	Range: 0.625-80 ng/mL (Cytometric Bead Array)	Recommended Dilutions: It is recommended that this reagent should be titrated in each testing system to obtain optimal results.
--	---	---

Product Information

MP02104-2 targets RLBP1 in immunoassays as a matched antibody pair. Validated in Cytometric bead array.

Capture antibody: RLBP1 Recombinant antibody, PBS Only (Capture) 85697-4-PBS (242989A1). 100 µg. Concentration 1 mg/mL.

Detection antibody: RLBP1 Recombinant antibody, PBS Only (Detector) 85697-2-PBS (242989B11). 100 µg. Concentration 1 mg/mL.

Unconjugated rabbit recombinant monoclonal antibody pair in PBS only storage buffer at a concentration of 1 mg/mL, ready for conjugation. Created using Proteintech's proprietary in-house recombinant technology. Recombinant production enables unrivalled batch-to-batch consistency, easy scale-up, and future security of supply.

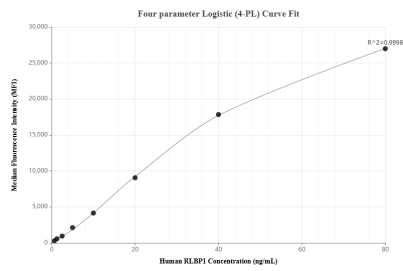
Matched antibody pairs are designed for use in a variety of assays and platforms that require matched antibody pairs.

Antibody use should be optimized for each application and assay.

Storage

Storage:
Store at -80°C.
The product is shipped with ice packs. Upon receipt, store it immediately at -80°C
Storage buffer:
PBS only

Selected Validation Data



Cytometric bead array standard curve of MP02104-2, RLBP1 Recombinant Matched Antibody Pair, PBS Only. Capture antibody: 85697-4-PBS. Detection antibody: 85697-2-PBS. Standard: Ag7602. Range: 0.625-80 ng/mL