

ALDH3A1 Recombinant Matched Antibody Pair, PBS Only

Catalog Number: **MP02087-2**

Capture Antibody Information

Catalog Number:
85725-4-PBS
Host:
Rabbit
Isotype:
IgG
Purification Method:
Protein A purification

Clone ID:
243134D11
Reactivity:
human
GenBank:
BC004370
Immunogen Catalog Number:
Ag7977

Conjugate:
Unconjugated
Full name:
aldehyde dehydrogenase 3 family, memberA1
Gene ID:
218

Detection Antibody Information

Catalog Number:
85725-2-PBS
Host:
Rabbit
Isotype:
IgG
Purification Method:
Protein A purification

Clone ID:
243134A4
Reactivity:
human
GenBank:
BC004370
Immunogen Catalog Number:
Ag7977

Conjugate:
Unconjugated
Full name:
aldehyde dehydrogenase 3 family, memberA1
Gene ID:
218

Applications

Tested Applications:
Cytometric bead array

Range:
1.563-200 ng/mL (Cytometric Bead Array)

Recommended Dilutions:
It is recommended that this reagent should be titrated in each testing system to obtain optimal results.

Product Information

MP02087-2 targets ALDH3A1 in immunoassays as a matched antibody pair. Validated in Cytometric bead array.

Capture antibody: ALDH3A1 Recombinant antibody, PBS Only (Capture) 85725-4-PBS (243134D11). 100 µg. Concentration 1 mg/mL.

Detection antibody: ALDH3A1 Recombinant antibody, PBS Only (Detector) 85725-2-PBS (243134A4). 100 µg. Concentration 1 mg/mL.

Unconjugated rabbit recombinant monoclonal antibody pair in PBS only storage buffer at a concentration of 1 mg/mL, ready for conjugation. Created using Proteintech's proprietary in-house recombinant technology. Recombinant production enables unrivalled batch-to-batch consistency, easy scale-up, and future security of supply.

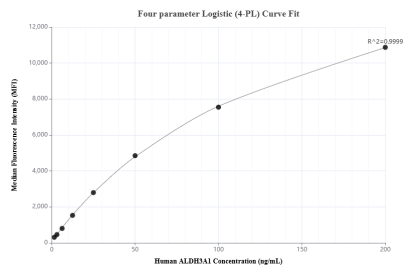
Matched antibody pairs are designed for use in a variety of assays and platforms that require matched antibody pairs.

Antibody use should be optimized for each application and assay.

Storage

Storage:
Store at -80°C.
The product is shipped with ice packs. Upon receipt, store it immediately at -80°C
Storage buffer:
PBS only

Selected Validation Data



Cytometric bead array standard curve of MP02087-2, ALDH3A1 Recombinant Matched Antibody Pair, PBS Only. Capture antibody: 85725-4-PBS. Detection antibody: 85725-2-PBS. Standard: Ag7977. Range: 1.563-200 ng/mL.