

ZEB1 Recombinant Matched Antibody Pair, PBS Only

Catalog Number: **MP02086-1**

Capture Antibody Information

Catalog Number: 85729-6-PBS	Clone ID: 243139C5	Conjugate: Unconjugated
Host: Rabbit	Reactivity: human	Full name: zinc finger E-box binding homeobox 1
Isotype: IgG	GenBank: BC112392	Gene ID: 6935
Purification Method: Protein A purification	Immunogen Catalog Number: Ag16204	

Detection Antibody Information

Catalog Number: 85729-5-PBS	Clone ID: 243139H4	Conjugate: Unconjugated
Host: Rabbit	Reactivity: human	Full name: zinc finger E-box binding homeobox 1
Isotype: IgG	GenBank: BC112392	Gene ID: 6935
Purification Method: Protein A purification	Immunogen Catalog Number: Ag16204	

Applications

Tested Applications: Cytometric bead array, Sandwich ELISA	Range: 0.625-80 ng/mL (Cytometric Bead Array) 39.1-2500 pg/mL (Sandwich ELISA)	Recommended Dilutions: It is recommended that this reagent should be titrated in each testing system to obtain optimal results.
--	---	---

Product Information

MP02086-1 targets ZEB1 in immunoassays as a matched antibody pair. Validated in Cytometric bead array, Sandwich ELISA.

Capture antibody: ZEB1 Recombinant antibody, PBS Only (Capture) 85729-6-PBS (243139C5). 100 µg. Concentration 1 mg/mL.

Detection antibody: ZEB1 Recombinant antibody, PBS Only (Detector) 85729-5-PBS (243139H4). 100 µg. Concentration 1 mg/mL.

Unconjugated rabbit recombinant monoclonal antibody pair in PBS only storage buffer at a concentration of 1 mg/mL, ready for conjugation. Created using Proteintech's proprietary in-house recombinant technology. Recombinant production enables unrivalled batch-to-batch consistency, easy scale-up, and future security of supply.

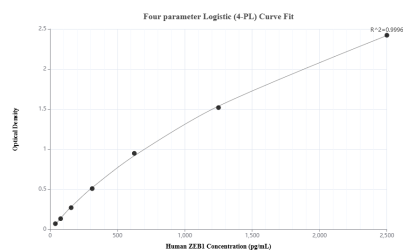
Matched antibody pairs are designed for use in a variety of assays and platforms that require matched antibody pairs.

Antibody use should be optimized for each application and assay.

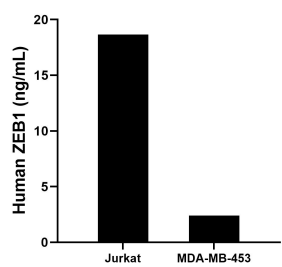
Storage

Storage:
Store at -80°C.
The product is shipped with ice packs. Upon receipt, store it immediately at -80°C
Storage buffer:
PBS only

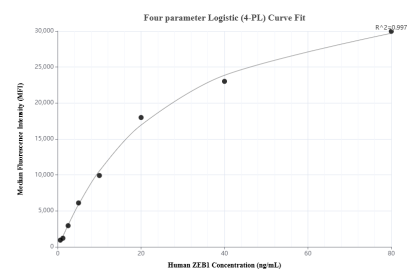
Selected Validation Data



Sandwich ELISA standard curve of MP02086-1, Human ZEB1 Recombinant Matched Antibody Pair - PBS only. 85729-6-PBS was coated to a plate as the capture antibody and incubated with serial dilutions of standard Ag16204. 85729-5-PBS was HRP conjugated as the detection antibody. Range: 39.1-2500 pg/mL



The mean ZEB1 concentration was determined to be 18.65 ng/mL in Jurkat cell extract based on a 1.9 mg/mL extract load and 2.41 ng/mL in MDA-MB-453 cell extract based on a 1.5 mg/mL extract load.



Cytometric bead array standard curve of MP02086-1, ZEB1 Recombinant Matched Antibody Pair, PBS Only. Capture antibody: 85729-6-PBS. Detection antibody: 85729-5-PBS. Standard: Ag16204. Range: 0.625-80 ng/mL