

For Research Use Only

# Prolactin Recombinant Matched Antibody Pair, PBS Only



Catalog Number:MP02083-4

## Capture Antibody Information

**Catalog Number:**  
85765-7-PBS  
**Host:**  
Rabbit  
**Isotype:**  
IgG  
**Purification Method:**  
Protein A purification

**Clone ID:**  
252191D7  
**Reactivity:**  
human  
**GenBank:**  
NM\_000948.5  
**Immunogen Catalog Number:**  
Eg5868

**Conjugate:**  
Unconjugated  
**Full name:**  
prolactin  
**Gene ID:**  
5617

## Detection Antibody Information

**Catalog Number:**  
85765-6-PBS  
**Host:**  
Rabbit  
**Isotype:**  
IgG  
**Purification Method:**  
Protein A purification

**Clone ID:**  
252191F8  
**Reactivity:**  
human  
**GenBank:**  
NM\_000948.5  
**Immunogen Catalog Number:**  
Eg5868

**Conjugate:**  
Unconjugated  
**Full name:**  
prolactin  
**Gene ID:**  
5617

## Applications

**Tested Applications:**  
Sandwich ELISA

**Range:**  
15.6-1000 pg/mL (Sandwich ELISA)

**Recommended Dilutions:**  
It is recommended that this reagent should be titrated in each testing system to obtain optimal results.

## Product Information

MP02083-4 targets Prolactin in immunoassays as a matched antibody pair. Validated in Sandwich ELISA.

Capture antibody: PRL Recombinant monoclonal antibody, PBS Only (Capture) 85765-7-PBS (252191D7). 100  $\mu$ g. Concentration 1 mg/mL.

Detection antibody: PRL Recombinant monoclonal antibody, PBS Only (Detector) 85765-6-PBS (252191F8). 100  $\mu$ g. Concentration 1 mg/mL.

Unconjugated rabbit recombinant monoclonal antibody pair in PBS only storage buffer at a concentration of 1 mg/mL, ready for conjugation. Created using Proteintech's proprietary in-house recombinant technology. Recombinant production enables unrivalled batch-to-batch consistency, easy scale-up, and future security of supply.

Matched antibody pairs are designed for use in a variety of assays and platforms that require matched antibody pairs.

Antibody use should be optimized for each application and assay.

## Storage

**Storage:**  
Store at -80°C.  
**The product is shipped with ice packs. Upon receipt, store it immediately at -80°C**  
**Storage buffer:**  
PBS only

For technical support and original validation data for this product please contact:

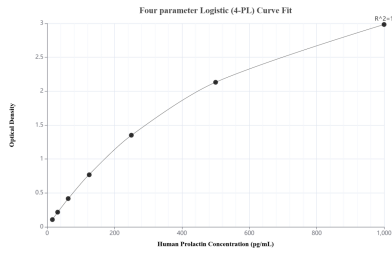
T: 4006900926

E: Proteintech-CN@ptglab.com

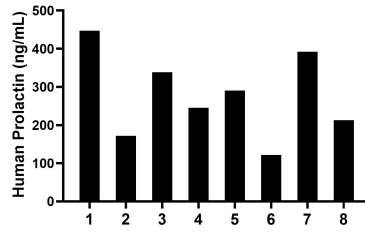
W: ptgcn.com

**This product is exclusively available under Proteintech Group brand and is not available to purchase from any other manufacturer.**

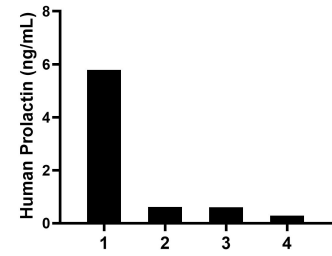
## Selected Validation Data



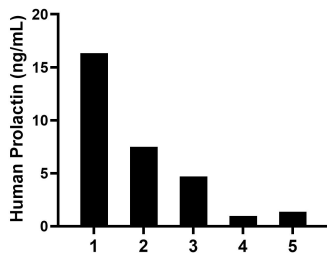
Sandwich ELISA standard curve of MP02083-4, Human Prolactin Recombinant Matched Antibody Pair - PBS only. 85765-7-PBS was coated to a plate as the capture antibody and incubated with serial dilutions of standard Eg5868. 85765-6-PBS was HRP conjugated as the detection antibody. Range: 15.6-1000 pg/mL



Serum of eight individual pregnant women donors was measured. The Prolactin concentration of detected samples was determined to be 277.5 ng/mL with a range of 121.7-447.4 ng/mL.



Plasma of four individual healthy human donors was measured. The Prolactin concentration of detected samples was determined to be 1.8 ng/mL with a range of 0.3-5.8 ng/mL.



Human milk of five individual healthy human donors was measured. The Prolactin concentration of detected samples was determined to be 6.2 ng/mL with a range of 1.0-16.3 ng/mL.