

For Research Use Only

SCN9A Recombinant Matched Antibody Pair, PBS Only



Catalog Number:MP02070-3

Capture Antibody Information

Catalog Number:
85279-5-PBS
Host:
Rabbit
Isotype:
IgG
Purification Method:
Protein A purification

Clone ID:
242997H1
Reactivity:
human
GenBank:
NM_001365536.1

Conjugate:
Unconjugated
Full name:
sodium channel, voltage-gated, type IX, alpha subunit
Gene ID:
6335

Detection Antibody Information

Catalog Number:
85279-2-PBS
Host:
Rabbit
Isotype:
IgG
Purification Method:
Protein A purification

Clone ID:
242997F10
Reactivity:
human
GenBank:
NM_001365536.1

Conjugate:
Unconjugated
Full name:
sodium channel, voltage-gated, type IX, alpha subunit
Gene ID:
6335

Applications

Tested Applications:
Sandwich ELISA

Range:
31.3-2000 pg/mL (Sandwich ELISA)

Recommended Dilutions:
It is recommended that this reagent should be titrated in each testing system to obtain optimal results.

Product Information

MP02070-3 targets SCN9A in immunoassays as a matched antibody pair. Validated in Sandwich ELISA.

Capture antibody: SCN9A Recombinant monoclonal antibody, PBS Only (Capture) 85279-5-PBS (242997H1). 100 µg. Concentration 1 mg/mL.

Detection antibody: SCN9A Recombinant monoclonal antibody, PBS Only (Capture/Detector) 85279-2-PBS (242997F10). 100 µg. Concentration 1 mg/mL.

Unconjugated rabbit recombinant monoclonal antibody pair in PBS only storage buffer at a concentration of 1 mg/mL, ready for conjugation. Created using Proteintech's proprietary in-house recombinant technology. Recombinant production enables unrivalled batch-to-batch consistency, easy scale-up, and future security of supply.

Matched antibody pairs are designed for use in a variety of assays and platforms that require matched antibody pairs.

Antibody use should be optimized for each application and assay.

Storage

Storage:
Store at -80°C.
The product is shipped with ice packs. Upon receipt, store it immediately at -80°C
Storage buffer:
PBS only

For technical support and original validation data for this product please contact:

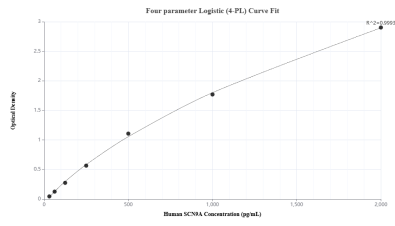
T: 4006900926

E: Proteintech-CN@ptglab.com

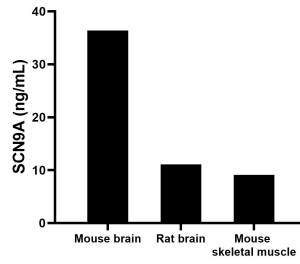
W: ptgcn.com

This product is exclusively available under Proteintech Group brand and is not available to purchase from any other manufacturer.

Selected Validation Data



Sandwich ELISA standard curve of MP02070-3, Human SCN9A Recombinant Matched Antibody Pair - PBS only. 85279-5-PBS was coated to a plate as the capture antibody and incubated with serial dilutions of standard SY02473. 85279-2-PBS was HRP conjugated as the detection antibody. Range: 31.3-2000 pg/mL



The mean SCN9A concentration was determined to be 36.40 ng/mL in mouse brain tissue extract based on a 6.3 mg/mL extract load, 11.10 ng/mL in rat brain tissue extract based on a 3.9 mg/mL extract load and 9.10 ng/mL in mouse skeletal muscle tissue extract based on a 4.1 mg/mL extract load.