

THOC1 Recombinant Matched Antibody Pair, PBS Only

Catalog Number: **MP02063-3**

Capture Antibody Information

Catalog Number:
85642-6-PBS
Host:
Rabbit
Isotype:
IgG
Purification Method:
Protein A purification

Clone ID:
243161C6
Reactivity:
human
GenBank:
BC010381
Immunogen Catalog Number:
Ag1352

Conjugate:
Unconjugated
Full name:
THO complex 1
Gene ID:
9984

Detection Antibody Information

Catalog Number:
85642-3-PBS
Host:
Rabbit
Isotype:
IgG
Purification Method:
Protein A purification

Clone ID:
243161H5
Reactivity:
human
GenBank:
BC010381
Immunogen Catalog Number:
Ag1352

Conjugate:
Unconjugated
Full name:
THO complex 1
Gene ID:
9984

Applications

Tested Applications:
Sandwich ELISA

Range:
78.1-5000 pg/mL (Sandwich ELISA)

Recommended Dilutions:
It is recommended that this reagent should be titrated in each testing system to obtain optimal results.

Product Information

MP02063-3 targets THOC1 in immunoassays as a matched antibody pair. Validated in Sandwich ELISA.

Capture antibody: THOC1 Recombinant antibody, PBS Only (Capture) 85642-6-PBS (243161C6). 100 µg. Concentration 1 mg/mL.

Detection antibody: THOC1 Recombinant antibody, PBS Only (Detector) 85642-3-PBS (243161H5). 100 µg. Concentration 1 mg/mL.

Unconjugated rabbit recombinant monoclonal antibody pair in PBS only storage buffer at a concentration of 1 mg/mL, ready for conjugation. Created using Proteintech's proprietary in-house recombinant technology. Recombinant production enables unrivalled batch-to-batch consistency, easy scale-up, and future security of supply.

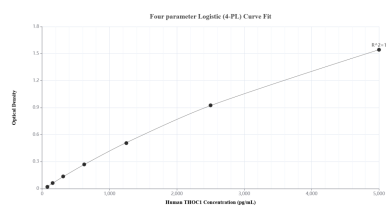
Matched antibody pairs are designed for use in a variety of assays and platforms that require matched antibody pairs.

Antibody use should be optimized for each application and assay.

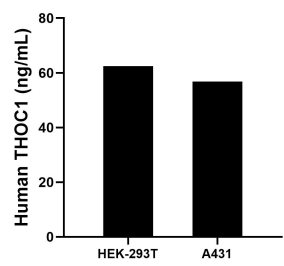
Storage

Storage:
Store at -80°C.
The product is shipped with ice packs. Upon receipt, store it immediately at -80°C
Storage buffer:
PBS only

Selected Validation Data



Sandwich ELISA standard curve of MP02063-3, Human THOC1 Recombinant Matched Antibody Pair - PBS only. 85642-6-PBS was coated to a plate as the capture antibody and incubated with serial dilutions of standard Ag1352. 85642-3-PBS was HRP conjugated as the detection antibody. Range: 78.1-5000 pg/mL.



The mean THOC1 concentration was determined to be 62.5 ng/mL in HEK-293T cell extract based on a 3.2 mg/mL extract load and 56.8 ng/mL in A431 cell extract based on a 3.7 mg/mL extract load.