

THOC1 Recombinant Matched Antibody Pair, PBS Only

Catalog Number: **MP02063-1**

Capture Antibody Information

Catalog Number:
85642-4-PBS
Host:
Rabbit
Isotype:
IgG
Purification Method:
Protein A purification

Clone ID:
243161E6
Reactivity:
human
GenBank:
BC010381
Immunogen Catalog Number:
Ag1352

Conjugate:
Unconjugated
Full name:
THO complex 1
Gene ID:
9984

Detection Antibody Information

Catalog Number:
85642-3-PBS
Host:
Rabbit
Isotype:
IgG
Purification Method:
Protein A purification

Clone ID:
243161H5
Reactivity:
human
GenBank:
BC010381
Immunogen Catalog Number:
Ag1352

Conjugate:
Unconjugated
Full name:
THO complex 1
Gene ID:
9984

Applications

Tested Applications:
Cytometric bead array

Range:
0.781-100 ng/mL (Cytometric Bead Array)

Recommended Dilutions:
It is recommended that this reagent should be titrated in each testing system to obtain optimal results.

Product Information

MP02063-1 targets THOC1 in immunoassays as a matched antibody pair. Validated in Cytometric bead array.

Capture antibody: THOC1 Recombinant antibody, PBS Only (Capture) 85642-4-PBS (243161E6). 100 µg. Concentration 1 mg/mL.

Detection antibody: THOC1 Recombinant antibody, PBS Only (Detector) 85642-3-PBS (243161H5). 100 µg. Concentration 1 mg/mL.

Unconjugated rabbit recombinant monoclonal antibody pair in PBS only storage buffer at a concentration of 1 mg/mL, ready for conjugation. Created using Proteintech's proprietary in-house recombinant technology. Recombinant production enables unrivalled batch-to-batch consistency, easy scale-up, and future security of supply.

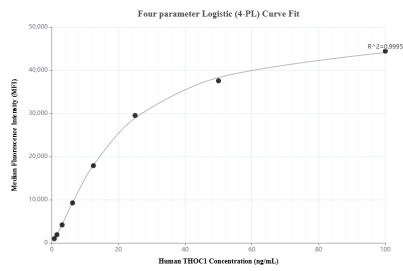
Matched antibody pairs are designed for use in a variety of assays and platforms that require matched antibody pairs.

Antibody use should be optimized for each application and assay.

Storage

Storage:
Store at -80°C.
The product is shipped with ice packs. Upon receipt, store it immediately at -80°C
Storage buffer:
PBS only

Selected Validation Data



Cytometric bead array standard curve of MP02063-1, THOC1 Recombinant Matched Antibody Pair, PBS Only. Capture antibody: 85642-4-PBS. Detection antibody: 85642-3-PBS. Standard: Ag1352. Range: 0.781-100 ng/mL.