

# Angiogenin Recombinant Matched Antibody Pair, PBS Only

Catalog Number: **MP02050-3**

## Capture Antibody Information

**Catalog Number:**  
85635-3-PBS  
**Host:**  
Rabbit  
**Isotype:**  
IgG  
**Purification Method:**  
Protein A purification

**Clone ID:**  
242738A7  
**Reactivity:**  
human  
**GenBank:**  
BC054880

**Conjugate:**  
Unconjugated  
**Full name:**  
angiogenin, ribonuclease, RNase A family, 5  
**Gene ID:**  
283

## Detection Antibody Information

**Catalog Number:**  
85635-4-PBS  
**Host:**  
Rabbit  
**Isotype:**  
IgG  
**Purification Method:**  
Protein A purification

**Clone ID:**  
242738A12  
**Reactivity:**  
human  
**GenBank:**  
BC054880

**Conjugate:**  
Unconjugated  
**Full name:**  
angiogenin, ribonuclease, RNase A family, 5  
**Gene ID:**  
283

## Applications

**Tested Applications:**  
Sandwich ELISA

**Range:**  
39.1-2500 pg/mL (Sandwich ELISA)

**Recommended Dilutions:**  
It is recommended that this reagent should be titrated in each testing system to obtain optimal results.

## Product Information

MP02050-3 targets Angiogenin in immunoassays as a matched antibody pair. Validated in Sandwich ELISA.

Capture antibody: ANG Recombinant antibody, PBS Only (Capture) 85635-3-PBS (242738A7). 100 µg. Concentration 1 mg/mL.

Detection antibody: ANG Recombinant antibody, PBS Only (Detector) 85635-4-PBS (242738A12). 100 µg. Concentration 1 mg/mL.

Unconjugated rabbit recombinant monoclonal antibody pair in PBS only storage buffer at a concentration of 1 mg/mL, ready for conjugation. Created using Proteintech's proprietary in-house recombinant technology. Recombinant production enables unrivalled batch-to-batch consistency, easy scale-up, and future security of supply.

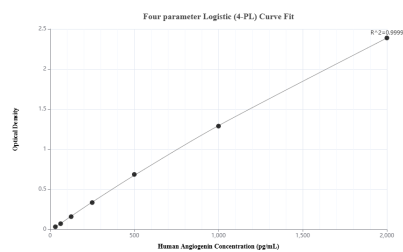
Matched antibody pairs are designed for use in a variety of assays and platforms that require matched antibody pairs.

Antibody use should be optimized for each application and assay.

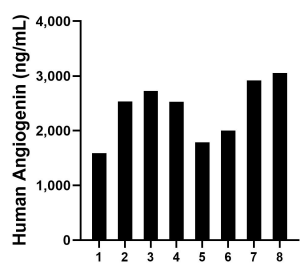
## Storage

**Storage:**  
Store at -80°C.  
**The product is shipped with ice packs. Upon receipt, store it immediately at -80°C**  
**Storage buffer:**  
PBS only

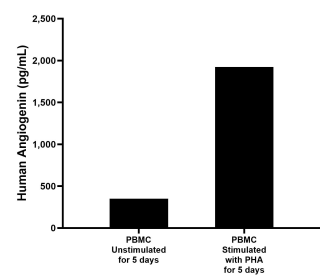
## Selected Validation Data



Sandwich ELISA standard curve of MP02050-3, Human Angiogenin Recombinant Matched Antibody Pair - PBS only. 85635-3-PBS was coated to a plate as the capture antibody and incubated with serial dilutions of standard Eg1930. 85635-4-PBS was HRP conjugated as the detection antibody. Range: 39.1-2500 pg/mL



Serum of eight individual healthy human donors was measured. The human Angiogenin concentration of detected samples was determined to be 2,391.69 ng/mL with a range of 1,589.9-3,053.2 ng/mL.



Human peripheral blood mononuclear cells (PBMC) were cultured unstimulated or stimulated with 10  $\mu$ g/mL PHA for 5 days. The mean Angiogenin concentration was determined to be 350.15 pg/mL in unstimulated PBMC supernatant, 1,922.45 pg/mL in PHA stimulated PBMC supernatant.