

# Mouse IL-12RB1 Recombinant Matched Antibody Pair, PBS Only

Catalog Number: **MP02048-1**

## Capture Antibody Information

**Catalog Number:**

85661-4-PBS

**Host:**

Rabbit

**Isotype:**

IgG

**Purification Method:**

Protein A purification

**Clone ID:**

243021C4

**Reactivity:**

mouse

**GenBank:**

NM\_008353.2

**Conjugate:**

Unconjugated

**Full name:**

interleukin 12 receptor, beta 1

**Gene ID:**

16161

## Detection Antibody Information

**Catalog Number:**

85661-3-PBS

**Host:**

Rabbit

**Isotype:**

IgG

**Purification Method:**

Protein A purification

**Clone ID:**

243021F7

**Reactivity:**

mouse

**GenBank:**

NM\_008353.2

**Conjugate:**

Unconjugated

**Full name:**

interleukin 12 receptor, beta 1

**Gene ID:**

16161

## Applications

**Tested Applications:**

Cytometric bead array, Sandwich ELISA

**Range:**

0.781-100 ng/mL (Cytometric Bead Array)  
0.781-50 ng/mL (Sandwich ELISA)

**Recommended Dilutions:**

It is recommended that this reagent should be titrated in each testing system to obtain optimal results.

## Product Information

MP02048-1 targets IL-12RB1 in immunoassays as a matched antibody pair. Validated in Cytometric bead array, Sandwich ELISA.

Capture antibody: Mouse IL-12 R beta 1 Recombinant antibody, PBS Only (Capture) 85661-4-PBS (243021C4). 100 µg. Concentration 1 mg/mL.

Detection antibody: Mouse IL-12 R beta 1 Recombinant antibody, PBS Only (Detector) 85661-3-PBS (243021F7). 100 µg. Concentration 1 mg/mL.

Unconjugated rabbit recombinant monoclonal antibody pair in PBS only storage buffer at a concentration of 1 mg/mL, ready for conjugation. Created using Proteintech's proprietary in-house recombinant technology. Recombinant production enables unrivalled batch-to-batch consistency, easy scale-up, and future security of supply.

Matched antibody pairs are designed for use in a variety of assays and platforms that require matched antibody pairs.

Antibody use should be optimized for each application and assay.

## Storage

**Storage:**

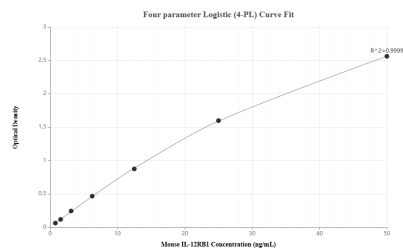
Store at -80°C.

The product is shipped with ice packs. Upon receipt, store it immediately at -80°C

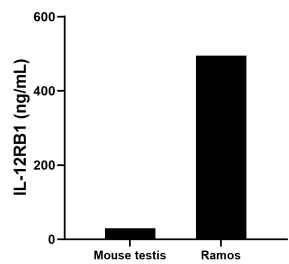
**Storage buffer:**

PBS only

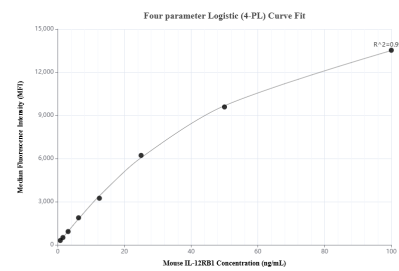
## Selected Validation Data



Sandwich ELISA standard curve of MP02048-1, Mouse IL-12RB1 Recombinant Matched Antibody Pair - PBS only. 85661-4-PBS was coated to a plate as the capture antibody and incubated with serial dilutions of standard Eg3196. 85661-3-PBS was HRP conjugated as the detection antibody. Range: 0.781-50 ng/mL



The mean IL-12RB1 concentration was determined to be 29.82 ng/mL in mouse testis tissue extract based on a 1.1 mg/mL extract load and 495.17 ng/mL in Ramos cell extract based on a 1.4 mg/mL extract load.



Cytometric bead array standard curve of MP02048-1, MOUSE IL-12RB1 Recombinant Matched Antibody Pair, PBS Only. Capture antibody: 85661-4-PBS. Detection antibody: 85661-3-PBS. Standard: Eg3196. Range: 0.781-100 ng/mL