

Mouse C5a Recombinant Matched Antibody Pair, PBS Only

Catalog Number: **MP02047-2**

Capture Antibody Information

Catalog Number:

85659-4-PBS

Host:

Rabbit

Isotype:

IgG

Purification Method:

Protein A purification

Clone ID:

242757H6

Reactivity:

mouse

GenBank:

NM_010406.2

Conjugate:

Unconjugated

Full name:

hemolytic complement

Gene ID:

15139

Detection Antibody Information

Catalog Number:

85659-3-PBS

Host:

Rabbit

Isotype:

IgG

Purification Method:

Protein A purification

Clone ID:

242757A3

Reactivity:

mouse

GenBank:

NM_010406.2

Conjugate:

Unconjugated

Full name:

hemolytic complement

Gene ID:

15139

Applications

Tested Applications:

Cytometric bead array, Sandwich ELISA

Range:

0.781-100 ng/mL (Cytometric Bead Array)
23.4-1500 pg/mL (Sandwich ELISA)

Recommended Dilutions:

It is recommended that this reagent should be titrated in each testing system to obtain optimal results.

Product Information

MP02047-2 targets C5a in immunoassays as a matched antibody pair. Validated in Cytometric bead array, Sandwich ELISA.

Capture antibody: Mouse Complement Component C5a Recombinant antibody, PBS Only (Capture) 85659-4-PBS (242757H6). 100 μ g. Concentration 1 mg/mL.

Detection antibody: Mouse Complement Component C5a Recombinant antibody, PBS Only (Detector) 85659-3-PBS (242757A3). 100 μ g. Concentration 1 mg/mL.

Unconjugated rabbit recombinant monoclonal antibody pair in PBS only storage buffer at a concentration of 1 mg/mL, ready for conjugation. Created using Proteintech's proprietary in-house recombinant technology. Recombinant production enables unrivalled batch-to-batch consistency, easy scale-up, and future security of supply.

Matched antibody pairs are designed for use in a variety of assays and platforms that require matched antibody pairs.

Antibody use should be optimized for each application and assay.

Storage

Storage:

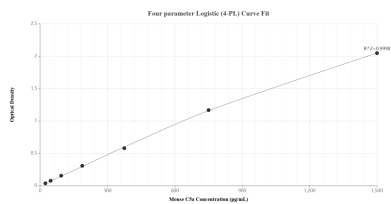
Store at -80°C.

The product is shipped with ice packs. Upon receipt, store it immediately at -80°C

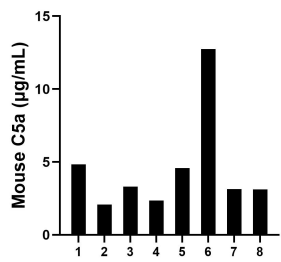
Storage buffer:

PBS only

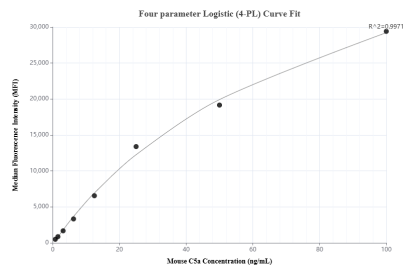
Selected Validation Data



Sandwich ELISA standard curve of MP02047-2, Mouse C5a Recombinant Matched Antibody Pair - PBS only. 85659-4-PBS was coated to a plate as the capture antibody and incubated with serial dilutions of standard Eg3332. 85659-3-PBS was HRP conjugated as the detection antibody. Range: 23.4-1500 pg/mL



Serum of eight mice was measured. The C5a concentration of detected samples was determined to be 4.5 µg/mL with a range of 2.1-12.8 µg/mL



Cytometric bead array standard curve of MP02047-2, MOUSE C5a Recombinant Matched Antibody Pair, PBS Only. Capture antibody: 85659-4-PBS. Detection antibody: 85659-3-PBS. Standard: Eg3332. Range: 0.781-100 ng/mL