

Rat Osteopontin/OPN Recombinant Matched Antibody Pair, PBS Only

Catalog Number: **MP02043-3**

Capture Antibody Information

Catalog Number: 85673-3-PBS	Clone ID: 242654C9	Conjugate: Unconjugated
Host: Rabbit	Reactivity: rat	Full name: secreted phosphoprotein 1
Isotype: IgG	GenBank: NM_012881.2	Gene ID: 25353
Purification Method: Protein A purification	Immunogen Catalog Number: Eg3247	

Detection Antibody Information

Catalog Number: 85673-4-PBS	Clone ID: 242654E4	Conjugate: Unconjugated
Host: Rabbit	Reactivity: rat	Full name: secreted phosphoprotein 1
Isotype: IgG	GenBank: NM_012881.2	Gene ID: 25353
Purification Method: Protein A purification	Immunogen Catalog Number: Eg3247	

Applications

Tested Applications: Sandwich ELISA	Range: 23.4-1500 pg/mL (Sandwich ELISA)	Recommended Dilutions: It is recommended that this reagent should be titrated in each testing system to obtain optimal results.
---	---	---

Product Information

MP02043-3 targets Osteopontin/OPN in immunoassays as a matched antibody pair. Validated in Sandwich ELISA.

Capture antibody: Rat Osteopontin Recombinant antibody, PBS Only (Capture) 85673-3-PBS (242654C9). 100 µg. Concentration 1 mg/mL.

Detection antibody: Rat Osteopontin Recombinant antibody, PBS Only (Detector) 85673-4-PBS (242654E4). 100 µg. Concentration 1 mg/mL.

Unconjugated rabbit recombinant monoclonal antibody pair in PBS only storage buffer at a concentration of 1 mg/mL, ready for conjugation. Created using Proteintech's proprietary in-house recombinant technology. Recombinant production enables unrivalled batch-to-batch consistency, easy scale-up, and future security of supply.

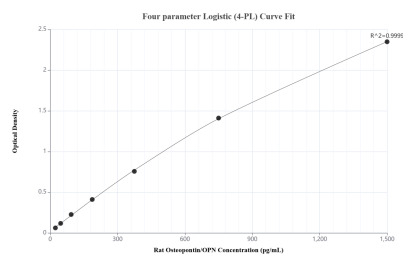
Matched antibody pairs are designed for use in a variety of assays and platforms that require matched antibody pairs.

Antibody use should be optimized for each application and assay.

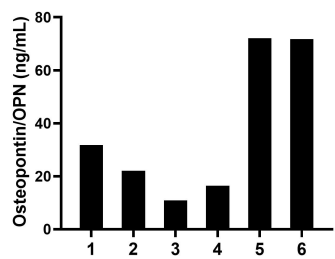
Storage

Storage:
Store at -80°C.
The product is shipped with ice packs. Upon receipt, store it immediately at -80°C
Storage buffer:
PBS only

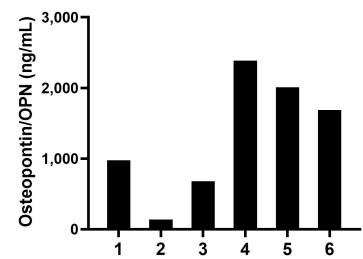
Selected Validation Data



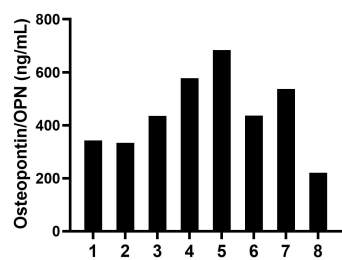
Sandwich ELISA standard curve of MP02043-3, Rat Osteopontin/OPN Recombinant Matched Antibody Pair - PBS only. 85673-3-PBS was coated to a plate as the capture antibody and incubated with serial dilutions of standard Eg3247. 85673-4-PBS was HRP conjugated as the detection antibody. Range: 23.4-1500 pg/mL



Serum of six mice was measured. The Osteopontin/OPN concentration of detected samples was determined to be 37.5 ng/mL with a range of 10.9-72.1 ng/mL.



Urine of six mice was measured. The Osteopontin/OPN concentration of detected samples was determined to be 1,311.5 ng/mL with a range of 137.8-2,384.1 ng/mL.



Serum of eight rats was measured. The Osteopontin/OPN concentration of detected samples was determined to be 445.8 ng/mL with a range of 220.2-683.6 ng/mL.