

# Serpin E1/PAI-1 Recombinant Matched Antibody Pair, PBS Only

Catalog Number: **MP02035-3**

## Capture Antibody Information

**Catalog Number:**  
85683-4-PBS  
**Host:**  
Rabbit  
**Isotype:**  
IgG  
**Purification Method:**  
Protein A purification

**Clone ID:**  
243115B1  
**Reactivity:**  
human  
**GenBank:**  
BC010860

**Conjugate:**  
Unconjugated  
**Full name:**  
serpin peptidase inhibitor, clade E (nexin, plasminogen activator inhibitor type 1), member 1  
**Gene ID:**  
5054

## Detection Antibody Information

**Catalog Number:**  
85683-2-PBS  
**Host:**  
Rabbit  
**Isotype:**  
IgG  
**Purification Method:**  
Protein A purification

**Clone ID:**  
243115D3  
**Reactivity:**  
human  
**GenBank:**  
BC010860

**Conjugate:**  
Unconjugated  
**Full name:**  
serpin peptidase inhibitor, clade E (nexin, plasminogen activator inhibitor type 1), member 1  
**Gene ID:**  
5054

## Applications

**Tested Applications:**  
Sandwich ELISA

**Range:**  
0.391-25 ng/mL (Sandwich ELISA)

**Recommended Dilutions:**  
It is recommended that this reagent should be titrated in each testing system to obtain optimal results.

## Product Information

MP02035-3 targets Serpin E1/PAI-1 in immunoassays as a matched antibody pair. Validated in Sandwich ELISA.

Capture antibody: SERPINE1 Recombinant antibody, PBS Only (Capture) 85683-4-PBS (243115B1). 100 µg. Concentration 1 mg/mL.

Detection antibody: SERPINE1 Recombinant antibody, PBS Only (Detector) 85683-2-PBS (243115D3). 100 µg. Concentration 1 mg/mL.

Unconjugated rabbit recombinant monoclonal antibody pair in PBS only storage buffer at a concentration of 1 mg/mL, ready for conjugation. Created using Proteintech's proprietary in-house recombinant technology. Recombinant production enables unrivalled batch-to-batch consistency, easy scale-up, and future security of supply.

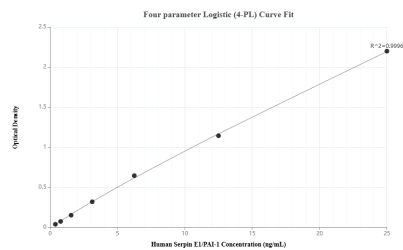
Matched antibody pairs are designed for use in a variety of assays and platforms that require matched antibody pairs.

Antibody use should be optimized for each application and assay.

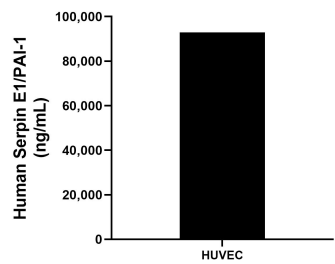
## Storage

**Storage:**  
Store at -80°C.  
**The product is shipped with ice packs. Upon receipt, store it immediately at -80°C**  
**Storage buffer:**  
PBS only

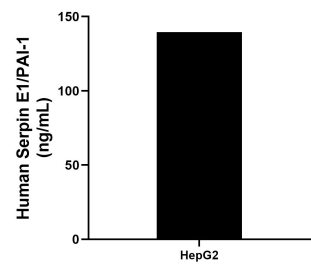
## Selected Validation Data



Sandwich ELISA standard curve of MP02035-3, Human Serpin E1/PAI-1 Recombinant Matched Antibody Pair - PBS only. 85683-4-PBS was coated to a plate as the capture antibody and incubated with serial dilutions of standard Eg3798. 85683-2-PBS was HRP conjugated as the detection antibody. Range: 0.391-25 ng/mL



The mean Serpin E1/PAI-1 concentration was determined to be 92,887.56 ng/mL in HUVEC cell extract based on a 1.4 mg/mL extract load.



HepG2 were cultured in DMEM supplemented with 10% fetal bovine serum, 2.5 mM L-glutamine, 100 U/mL penicillin, and 100 µg/mL streptomycin sulfate. An aliquot of the cell culture supernate was removed, assayed for human Serpin E1/PAI-1, and measured 139.44 ng/mL