

SPINT2/HAI-2 Recombinant Matched Antibody Pair, PBS Only

Catalog Number: **MP02034-3**

Capture Antibody Information

Catalog Number:
85684-5-PBS
Host:
Rabbit
Isotype:
IgG
Purification Method:
Protein A purification

Clone ID:
243094C6
Reactivity:
human
GenBank:
NM_021102.3
Immunogen Catalog Number:
Eg3130

Conjugate:
Unconjugated
Full name:
serine peptidase inhibitor, Kunitz
type, 2
Gene ID:
10653

Detection Antibody Information

Catalog Number:
85684-3-PBS
Host:
Rabbit
Isotype:
IgG
Purification Method:
Protein A purification

Clone ID:
243094B6
Reactivity:
human
GenBank:
NM_021102.3
Immunogen Catalog Number:
Eg3130

Conjugate:
Unconjugated
Full name:
serine peptidase inhibitor, Kunitz
type, 2
Gene ID:
10653

Applications

Tested Applications:
Sandwich ELISA

Range:
0.391-25 ng/mL (Sandwich ELISA)

Recommended Dilutions:
It is recommended that this reagent should be titrated in each testing system to obtain optimal results.

Product Information

MP02034-3 targets SPINT2/HAI-2 in immunoassays as a matched antibody pair. Validated in Sandwich ELISA.

Capture antibody: SPINT2 Recombinant antibody, PBS Only (Capture) 85684-5-PBS (243094C6). 100 µg. Concentration 1 mg/mL.

Detection antibody: SPINT2 Recombinant antibody, PBS Only (Detector) 85684-3-PBS (243094B6). 100 µg. Concentration 1 mg/mL.

Unconjugated rabbit recombinant monoclonal antibody pair in PBS only storage buffer at a concentration of 1 mg/mL, ready for conjugation. Created using Proteintech's proprietary in-house recombinant technology. Recombinant production enables unrivalled batch-to-batch consistency, easy scale-up, and future security of supply.

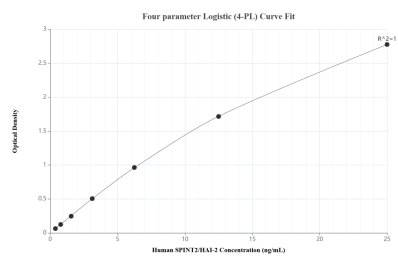
Matched antibody pairs are designed for use in a variety of assays and platforms that require matched antibody pairs.

Antibody use should be optimized for each application and assay.

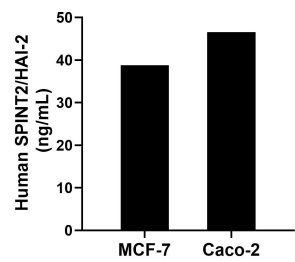
Storage

Storage:
Store at -80°C.
The product is shipped with ice packs. Upon receipt, store it immediately at -80°C
Storage buffer:
PBS only

Selected Validation Data



Sandwich ELISA standard curve of MP02034-3, Human SPINT2/HAI-2 Recombinant Matched Antibody Pair - PBS only. 85684-5-PBS was coated to a plate as the capture antibody and incubated with serial dilutions of standard Eg3130. 85684-3-PBS was HRP conjugated as the detection antibody. Range: 0.391-25 ng/mL



The mean SPINT2/HAI-2 concentration was determined to be 38.76 ng/mL in MCF-7 cell extract based on a 1.30 mg/mL extract load and 46.55 ng/mL in Caco-2 cell extract based on a 2.00 mg/mL extract load.