

# HOMER1 Recombinant Matched Antibody Pair, PBS Only

Catalog Number: **MP02028-3**

## Capture Antibody Information

Catalog Number: 85692-6-PBS	Clone ID: 243007E1	Conjugate: Unconjugated
Host: Rabbit	Reactivity: human	Full name: homer homolog 1 (Drosophila)
Isotype: IgG	GenBank: BC015502	Gene ID: 9456
Purification Method: Protein A purification	Immunogen Catalog Number: Ag3109	

## Detection Antibody Information

Catalog Number: 85692-5-PBS	Clone ID: 243007B4	Conjugate: Unconjugated
Host: Rabbit	Reactivity: human	Full name: homer homolog 1 (Drosophila)
Isotype: IgG	GenBank: BC015502	Gene ID: 9456
Purification Method: Protein A purification	Immunogen Catalog Number: Ag3109	

## Applications

Tested Applications: Sandwich ELISA	Range: 78.1-5000 pg/mL (Sandwich ELISA)	Recommended Dilutions: It is recommended that this reagent should be titrated in each testing system to obtain optimal results.
--	--	--

## Product Information

MP02028-3 targets HOMER1 in immunoassays as a matched antibody pair. Validated in Sandwich ELISA.

Capture antibody: HOMER1 Recombinant antibody, PBS Only (Capture) 85692-6-PBS (243007E1). 100 µg. Concentration 1 mg/mL.

Detection antibody: HOMER1 Recombinant antibody, PBS Only (Detector) 85692-5-PBS (243007B4). 100 µg. Concentration 1 mg/mL.

Unconjugated rabbit recombinant monoclonal antibody pair in PBS only storage buffer at a concentration of 1 mg/mL, ready for conjugation. Created using Proteintech's proprietary in-house recombinant technology. Recombinant production enables unrivalled batch-to-batch consistency, easy scale-up, and future security of supply.

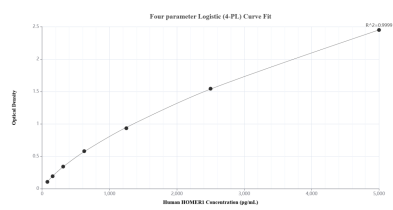
Matched antibody pairs are designed for use in a variety of assays and platforms that require matched antibody pairs.

Antibody use should be optimized for each application and assay.

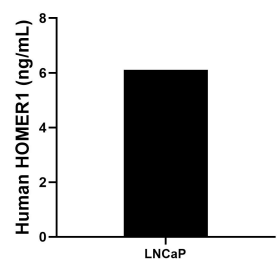
## Storage

Storage:  
Store at -80°C.  
**The product is shipped with ice packs. Upon receipt, store it immediately at -80°C**  
Storage buffer:  
PBS only

## Selected Validation Data



Sandwich ELISA standard curve of MP02028-3, Human HOMER1 Recombinant Matched Antibody Pair - PBS only. 85692-6-PBS was coated to a plate as the capture antibody and incubated with serial dilutions of standard Ag3109. 85692-5-PBS was HRP conjugated as the detection antibody. Range: 78.1-5000 pg/mL.



The mean HOMER1 concentration was determined to be 6.1 ng/mL in LNCaP cell extract based on a 2.6 mg/mL extract load.