

SNRPA1 Recombinant Matched Antibody Pair, PBS Only

Catalog Number: **MP02027-3**

Capture Antibody Information

Catalog Number: 85649-4-PBS	Clone ID: 243097D1	Conjugate: Unconjugated
Host: Rabbit	Reactivity: human	Full name: small nuclear ribonucleoprotein polypeptide A'
Isotype: IgG	GenBank: BC022816	Gene ID: 6627
Purification Method: Protein A purification	Immunogen Catalog Number: Ag10790	

Detection Antibody Information

Catalog Number: 85649-5-PBS	Clone ID: 243097E9	Conjugate: Unconjugated
Host: Rabbit	Reactivity: human	Full name: small nuclear ribonucleoprotein polypeptide A'
Isotype: IgG	GenBank: BC022816	Gene ID: 6627
Purification Method: Protein A purification	Immunogen Catalog Number: Ag10790	

Applications

Tested Applications: Sandwich ELISA	Range: 39.1-2500 pg/mL (Sandwich ELISA)	Recommended Dilutions: It is recommended that this reagent should be titrated in each testing system to obtain optimal results.
---	---	---

Product Information

MP02027-3 targets SNRPA1 in immunoassays as a matched antibody pair. Validated in Sandwich ELISA.

Capture antibody: SNRPA1 Recombinant antibody, PBS Only (Capture) 85649-4-PBS (243097D1). 100 µg. Concentration 1 mg/mL.

Detection antibody: SNRPA1 Recombinant antibody, PBS Only (Detector) 85649-5-PBS (243097E9). 100 µg. Concentration 1 mg/mL.

Unconjugated rabbit recombinant monoclonal antibody pair in PBS only storage buffer at a concentration of 1 mg/mL, ready for conjugation. Created using Proteintech's proprietary in-house recombinant technology. Recombinant production enables unrivalled batch-to-batch consistency, easy scale-up, and future security of supply.

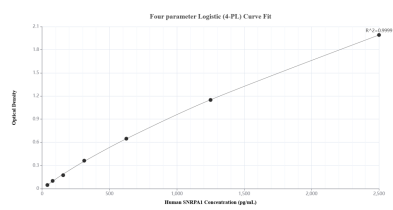
Matched antibody pairs are designed for use in a variety of assays and platforms that require matched antibody pairs.

Antibody use should be optimized for each application and assay.

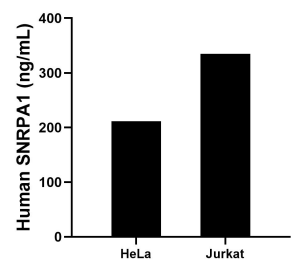
Storage

Storage:
Store at -80°C.
The product is shipped with ice packs. Upon receipt, store it immediately at -80°C
Storage buffer:
PBS only

Selected Validation Data



Sandwich ELISA standard curve of MP02027-3, Human SNRPA1 Recombinant Matched Antibody Pair - PBS only. 85649-4-PBS was coated to a plate as the capture antibody and incubated with serial dilutions of standard Ag10790. 85649-5-PBS was HRP conjugated as the detection antibody. Range: 39.1-2500 pg/mL.



The mean SNRPA1 concentration was determined to be 211.7 ng/mL in HeLa cell extract based on a 2.1 mg/mL extract load and 334.5 ng/mL in Jurkat cell extract based on a 1.9 mg/mL extract load.