

Mammaglobin A Recombinant Matched Antibody Pair, PBS Only

Catalog Number:MP02024-3



Capture Antibody Information	Catalog Number:	Clone ID:	Conjugate:
	85657-3-PBS	243101A9	Unconjugated
	Host:	Reactivity:	Full name:
	Rabbit	human	secretoglobin, family 2A, member 2
	Isotype:	GenBank:	Gene ID:
	IgG	NM_002411.3	4250
	Purification Method:		
	Protein A purification		

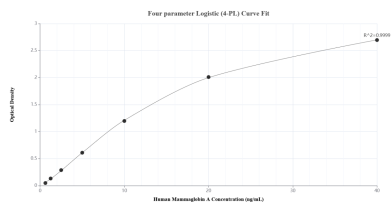
Detection Antibody Information	Catalog Number:	Clone ID:	Conjugate:
	85657-4-PBS	243101C2	Unconjugated
	Host:	Reactivity:	Full name:
	Rabbit	human	secretoglobin, family 2A, member 2
	Isotype:	GenBank:	Gene ID:
	IgG	NM_002411.3	4250
	Purification Method:		
	Protein A purification		

Applications	Tested Applications:	Range:	Recommended Dilutions:
	Sandwich ELISA	0.625-40 ng/mL (Sandwich ELISA)	It is recommended that this reagent should be titrated in each testing system to obtain optimal results.

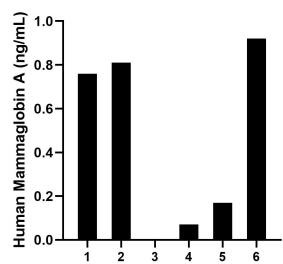
Product Information	MP02024-3 targets Mammaglobin A in immunoassays as a matched antibody pair. Validated in Sandwich ELISA.		
	Capture antibody: SCGB2A2 Recombinant antibody, PBS Only (Capture) 85657-3-PBS (243101A9). 100 µg. Concentration 1 mg/mL.		
	Detection antibody: SCGB2A2 Recombinant antibody, PBS Only (Detector) 85657-4-PBS (243101C2). 100 µg. Concentration 1 mg/mL.		
	Unconjugated rabbit recombinant monoclonal antibody pair in PBS only storage buffer at a concentration of 1 mg/mL, ready for conjugation. Created using Proteintech's proprietary in-house recombinant technology. Recombinant production enables unrivalled batch-to-batch consistency, easy scale-up, and future security of supply.		
	Matched antibody pairs are designed for use in a variety of assays and platforms that require matched antibody pairs.		
	Antibody use should be optimized for each application and assay.		

Storage	Storage:
	Store at -80°C.
	The product is shipped with ice packs. Upon receipt, store it immediately at -80°C
	Storage buffer:
	PBS only

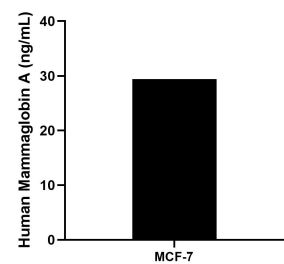
Selected Validation Data



Sandwich ELISA standard curve of MP02024-3, Human Mammaglobin A Recombinant Matched Antibody Pair - PBS only. 85657-3-PBS was coated to a plate as the capture antibody and incubated with serial dilutions of standard Eg2887. 85657-4-PBS was HRP conjugated as the detection antibody. Range: 0.625-40 ng/mL



Serum of six individual healthy human donors was measured. The Mammaglobin A concentration of detected samples was determined to be 0.46 ng/mL with a range of ND-0.92 ng/mL



The mean Mammaglobin A concentration was determined to be 29.40 ng/mL in MCF-7 cell extract based on a 3.50 mg/mL extract load.