

# UBE4B Recombinant Matched Antibody Pair, PBS Only

Catalog Number: **MP02017-3**

## Capture Antibody Information

**Catalog Number:**  
85332-5-PBS  
**Host:**  
Rabbit  
**Isotype:**  
IgG  
**Purification Method:**  
Protein A purification

**Clone ID:**  
242218F2  
**Reactivity:**  
human  
**GenBank:**  
BC093696  
**Immunogen Catalog Number:**  
Ag12836

**Conjugate:**  
Unconjugated  
**Full name:**  
ubiquitination factor E4B (UFD2 homolog, yeast)  
**Gene ID:**  
10277

## Detection Antibody Information

**Catalog Number:**  
85332-3-PBS  
**Host:**  
Rabbit  
**Isotype:**  
IgG  
**Purification Method:**  
Protein A purification

**Clone ID:**  
242218B10  
**Reactivity:**  
human  
**GenBank:**  
BC093696  
**Immunogen Catalog Number:**  
Ag12836

**Conjugate:**  
Unconjugated  
**Full name:**  
ubiquitination factor E4B (UFD2 homolog, yeast)  
**Gene ID:**  
10277

## Applications

**Tested Applications:**  
Sandwich ELISA

**Range:**  
46.9-3000 pg/mL (Sandwich ELISA)

**Recommended Dilutions:**  
It is recommended that this reagent should be titrated in each testing system to obtain optimal results.

## Product Information

MP02017-3 targets UBE4B in immunoassays as a matched antibody pair. Validated in Sandwich ELISA.

Capture antibody: UBE4B Recombinant antibody, PBS Only (Capture/Detector) 85332-5-PBS (242218F2). 100 µg. Concentration 1 mg/mL.

Detection antibody: UBE4B Recombinant antibody, PBS Only (Capture/Detector) 85332-3-PBS (242218B10). 100 µg. Concentration 1 mg/mL.

Unconjugated rabbit recombinant monoclonal antibody pair in PBS only storage buffer at a concentration of 1 mg/mL, ready for conjugation. Created using Proteintech's proprietary in-house recombinant technology. Recombinant production enables unrivalled batch-to-batch consistency, easy scale-up, and future security of supply.

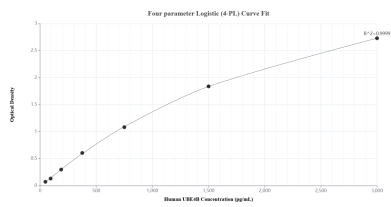
Matched antibody pairs are designed for use in a variety of assays and platforms that require matched antibody pairs.

Antibody use should be optimized for each application and assay.

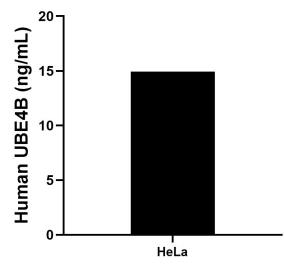
## Storage

**Storage:**  
Store at -80°C.  
**The product is shipped with ice packs. Upon receipt, store it immediately at -80°C**  
**Storage buffer:**  
PBS only

## Selected Validation Data



Sandwich ELISA standard curve of MP02017-3, Human UBE4B Recombinant Matched Antibody Pair - PBS only. 85332-5-PBS was coated to a plate as the capture antibody and incubated with serial dilutions of standard Ag12836. 85332-3-PBS was HRP conjugated as the detection antibody. Range: 46.9-3000 pg/mL.



The mean UBE4B concentration was determined to be 14.9 ng/mL in HeLa cell extract based on a 2.1 mg/mL extract load.