

RNF20 Recombinant Matched Antibody Pair, PBS Only

Catalog Number: **MP02014-3**

Capture Antibody Information

Catalog Number: 85630-5-PBS	Clone ID: 243078F6	Conjugate: Unconjugated
Host: Rabbit	Reactivity: human	Full name: ring finger protein 20
Isotype: IgG	GenBank: BC110585	Gene ID: 56254
Purification Method: Protein A purification	Immunogen Catalog Number: Ag16066	

Detection Antibody Information

Catalog Number: 85630-7-PBS	Clone ID: 243078D1	Conjugate: Unconjugated
Host: Rabbit	Reactivity: human	Full name: ring finger protein 20
Isotype: IgG	GenBank: BC110585	Gene ID: 56254
Purification Method: Protein A purification	Immunogen Catalog Number: Ag16066	

Applications

Tested Applications: Sandwich ELISA	Range: 0.781-50 ng/mL (Sandwich ELISA)	Recommended Dilutions: It is recommended that this reagent should be titrated in each testing system to obtain optimal results.
--	---	--

Product Information

MP02014-3 targets RNF20 in immunoassays as a matched antibody pair. Validated in Sandwich ELISA.

Capture antibody: RNF20 Recombinant antibody, PBS Only (Capture/Detector) 85630-5-PBS (243078F6). 100 µg. Concentration 1 mg/mL.

Detection antibody: RNF20 Recombinant antibody, PBS Only (Detector) 85630-7-PBS (243078D1). 100 µg. Concentration 1 mg/mL.

Unconjugated rabbit recombinant monoclonal antibody pair in PBS only storage buffer at a concentration of 1 mg/mL, ready for conjugation. Created using Proteintech's proprietary in-house recombinant technology. Recombinant production enables unrivalled batch-to-batch consistency, easy scale-up, and future security of supply.

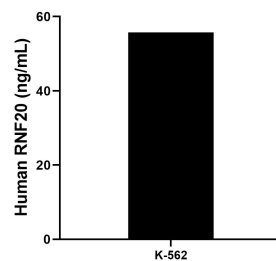
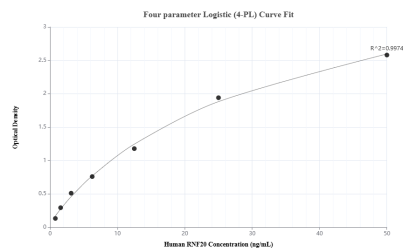
Matched antibody pairs are designed for use in a variety of assays and platforms that require matched antibody pairs.

Antibody use should be optimized for each application and assay.

Storage

Storage:
Store at -80°C.
The product is shipped with ice packs. Upon receipt, store it immediately at -80°C
Storage buffer:
PBS only

Selected Validation Data



Sandwich ELISA standard curve of MP02014-3, Human RNF20 Recombinant Matched Antibody Pair - PBS only. 85630-5-PBS was coated to a plate as the capture antibody and incubated with serial dilutions of standard Ag16066. 85630-7-PBS was HRP conjugated as the detection antibody. Range: 0.781-50 ng/mL

The mean RNF20 concentration was determined to be 55.74 ng/mL in K-562 cell extract based on a 2.5 mg/mL extract load.