

# Mouse IL-13RA2 Recombinant Matched Antibody Pair, PBS Only

Catalog Number: **MP02013-3**

## Capture Antibody Information

**Catalog Number:**  
98407-3-PBS  
**Host:**  
Rabbit  
**Isotype:**  
IgG  
**Purification Method:**  
Protein A purification

**Clone ID:**  
242742C4  
**Reactivity:**  
mouse  
**GenBank:**  
NM\_008356.4

**Conjugate:**  
Unconjugated  
**Full name:**  
interleukin 13 receptor, alpha 2  
**Gene ID:**  
16165

## Detection Antibody Information

**Catalog Number:**  
85631-5-PBS  
**Host:**  
Rabbit  
**Isotype:**  
IgG  
**Purification Method:**  
Protein A purification

**Clone ID:**  
242742C7  
**Reactivity:**  
mouse  
**GenBank:**  
NM\_008356.4

**Conjugate:**  
Unconjugated  
**Full name:**  
interleukin 13 receptor, alpha 2  
**Gene ID:**  
16165

## Applications

**Tested Applications:**  
Sandwich ELISA

**Range:**  
0.156-10 ng/mL (Sandwich ELISA)

**Recommended Dilutions:**  
It is recommended that this reagent should be titrated in each testing system to obtain optimal results.

## Product Information

MP02013-3 targets IL-13RA2 in immunoassays as a matched antibody pair. Validated in Sandwich ELISA.

Capture antibody: Anti-Mouse IL13ra2 Rabbit Recombinant Antibody, PBS Only (Capture) 98407-3-PBS (242742C4). 100 µg. Concentration 1 mg/mL.

Detection antibody: Mouse IL13ra2 Recombinant antibody, PBS Only (Detector) 85631-5-PBS (242742C7). 100 µg. Concentration 1 mg/mL.

Unconjugated rabbit recombinant monoclonal antibody pair in PBS only storage buffer at a concentration of 1 mg/mL, ready for conjugation. Created using Proteintech's proprietary in-house recombinant technology. Recombinant production enables unrivalled batch-to-batch consistency, easy scale-up, and future security of supply.

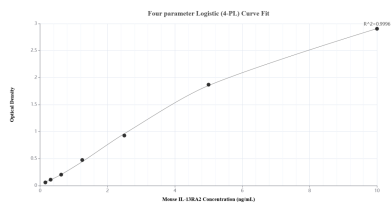
Matched antibody pairs are designed for use in a variety of assays and platforms that require matched antibody pairs.

Antibody use should be optimized for each application and assay.

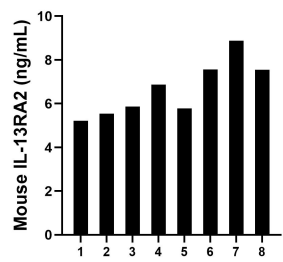
## Storage

**Storage:**  
Store at -80°C.  
**The product is shipped with ice packs. Upon receipt, store it immediately at -80°C**  
**Storage buffer:**  
PBS only

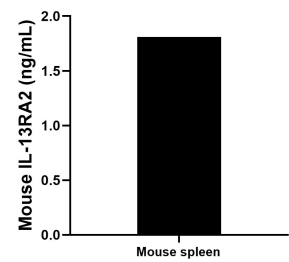
## Selected Validation Data



Sandwich ELISA standard curve of MP02013-3, Mouse IL-13RA2 Recombinant Matched Antibody Pair - PBS only. 98407-3-PBS was coated to a plate as the capture antibody and incubated with serial dilutions of standard Eg3118. 85631-5-PBS was HRP conjugated as the detection antibody. Range: 0.156-10 ng/mL



Serum of eight mice was measured. The IL-13RA2 concentration of detected samples was determined to be 6.65 ng/mL with a range of 5.21-8.88 ng/mL.



The mean IL-13RA2 concentration was determined to be 1.81 ng/mL in mouse spleen tissue homogenates extract based on a 2.30 mg/mL extract load.