

SF3B4 Recombinant Matched Antibody Pair, PBS Only

Catalog Number: **MP02012-3**

Capture Antibody Information

Catalog Number:
85663-6-PBS
Host:
Rabbit
Isotype:
IgG
Purification Method:
Protein A purification

Clone ID:
243098D2
Reactivity:
human
GenBank:
BC004273
Immunogen Catalog Number:
Ag0737

Conjugate:
Unconjugated
Full name:
splicing factor 3b, subunit 4, 49kDa
Gene ID:
10262

Detection Antibody Information

Catalog Number:
85663-2-PBS
Host:
Rabbit
Isotype:
IgG
Purification Method:
Protein A purification

Clone ID:
243098B6
Reactivity:
human
GenBank:
BC004273
Immunogen Catalog Number:
Ag0737

Conjugate:
Unconjugated
Full name:
splicing factor 3b, subunit 4, 49kDa
Gene ID:
10262

Applications

Tested Applications:
Sandwich ELISA

Range:
0.234-15 ng/mL (Sandwich ELISA)

Recommended Dilutions:
It is recommended that this reagent should be titrated in each testing system to obtain optimal results.

Product Information

MP02012-3 targets SF3B4 in immunoassays as a matched antibody pair. Validated in Sandwich ELISA.

Capture antibody: SF3B4 Recombinant antibody, PBS Only (Capture) 85663-6-PBS (243098D2). 100 µg. Concentration 1 mg/mL.

Detection antibody: SF3B4 Recombinant antibody, PBS Only (Detector) 85663-2-PBS (243098B6). 100 µg. Concentration 1 mg/mL.

Unconjugated rabbit recombinant monoclonal antibody pair in PBS only storage buffer at a concentration of 1 mg/mL, ready for conjugation. Created using Proteintech's proprietary in-house recombinant technology. Recombinant production enables unrivalled batch-to-batch consistency, easy scale-up, and future security of supply.

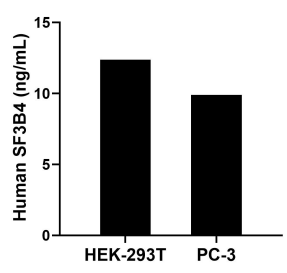
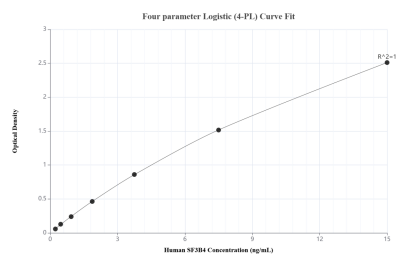
Matched antibody pairs are designed for use in a variety of assays and platforms that require matched antibody pairs.

Antibody use should be optimized for each application and assay.

Storage

Storage:
Store at -80°C.
The product is shipped with ice packs. Upon receipt, store it immediately at -80°C
Storage buffer:
PBS only

Selected Validation Data



Sandwich ELISA standard curve of MP02012-3, Human SF3B4 Recombinant Matched Antibody Pair - PBS only. 85663-6-PBS was coated to a plate as the capture antibody and incubated with serial dilutions of standard Ag0737. 85663-2-PBS was HRP conjugated as the detection antibody. Range: 0.234-15 ng/mL.

The mean SF3B4 concentration was determined to be 12.37 ng/mL in HEK-293T cell extract based on a 2.80 mg/mL extract load and 9.89 ng/mL in PC-3 cell extract based on a 2.50 mg/mL extract load.