

HPGDS Recombinant Matched Antibody Pair, PBS Only

Catalog Number: **MP02001-3**

Capture Antibody Information

Catalog Number:
85446-1-PBS
Host:
Rabbit
Isotype:
IgG
Purification Method:
Protein A purification

Clone ID:
242980A5
Reactivity:
human
GenBank:
BC020734
Immunogen Catalog Number:
Ag18290

Conjugate:
Unconjugated
Full name:
prostaglandin D2 synthase, hematopoietic
Gene ID:
27306

Detection Antibody Information

Catalog Number:
85446-4-PBS
Host:
Rabbit
Isotype:
IgG
Purification Method:
Protein A purification

Clone ID:
242980E6
Reactivity:
human
GenBank:
BC020734
Immunogen Catalog Number:
Ag18290

Conjugate:
Unconjugated
Full name:
prostaglandin D2 synthase, hematopoietic
Gene ID:
27306

Applications

Tested Applications:
Sandwich ELISA

Range:
156-5000 pg/mL (Sandwich ELISA)

Recommended Dilutions:
It is recommended that this reagent should be titrated in each testing system to obtain optimal results.

Product Information

MP02001-3 targets HPGDS in immunoassays as a matched antibody pair. Validated in Sandwich ELISA.

Capture antibody: HPGDS Recombinant antibody, PBS Only (Capture/Detector) 85446-1-PBS (242980A5). 100 µg. Concentration 1 mg/mL.

Detection antibody: HPGDS Recombinant antibody, PBS Only (Capture/Detector) 85446-4-PBS (242980E6). 100 µg. Concentration 1 mg/mL.

Unconjugated rabbit recombinant monoclonal antibody pair in PBS only storage buffer at a concentration of 1 mg/mL, ready for conjugation. Created using Proteintech's proprietary in-house recombinant technology. Recombinant production enables unrivalled batch-to-batch consistency, easy scale-up, and future security of supply.

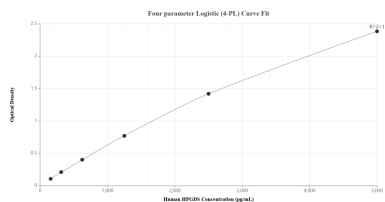
Matched antibody pairs are designed for use in a variety of assays and platforms that require matched antibody pairs.

Antibody use should be optimized for each application and assay.

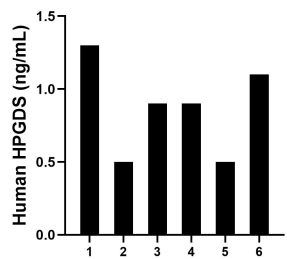
Storage

Storage:
Store at -80°C.
The product is shipped with ice packs. Upon receipt, store it immediately at -80°C
Storage buffer:
PBS only

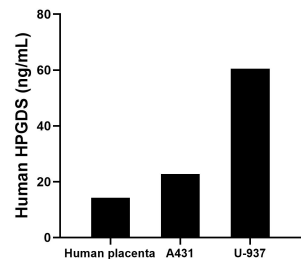
Selected Validation Data



Sandwich ELISA standard curve of MP02001-3, Human HPGDS Recombinant Matched Antibody Pair - PBS only. 85446-1-PBS was coated to a plate as the capture antibody and incubated with serial dilutions of standard Ag18290. 85446-4-PBS was HRP conjugated as the detection antibody. Range: 156-5000 pg/mL



Serum of six individual healthy human donors was measured. The HPGDS concentration of detected samples was determined to be 0.9 ng/mL with a range of 0.5-1.3 ng/mL



The mean HPGDS concentration was determined to be 14.2 ng/mL in human placenta extract based on a 1.3 mg/mL extract load, 22.7 ng/mL in A431 cell extract based on a 3.7 mg/mL extract load and 60.5 ng/mL in U-937 cell extract based on a 2.2 mg/mL extract load.