

PPA1 Recombinant Matched Antibody Pair, PBS Only

Catalog Number: **MP01999-2**

Capture Antibody Information

Catalog Number: 85445-1-PBS	Clone ID: 242963E11	Conjugate: Unconjugated
Host: Rabbit	Reactivity: human	Full name: pyrophosphatase (inorganic) 1
Isotype: IgG	GenBank: BC001022	Gene ID: 5464
Purification Method: Protein A purification	Immunogen Catalog Number: Ag6969	

Detection Antibody Information

Catalog Number: 85445-2-PBS	Clone ID: 242963H8	Conjugate: Unconjugated
Host: Rabbit	Reactivity: human	Full name: pyrophosphatase (inorganic) 1
Isotype: IgG	GenBank: BC001022	Gene ID: 5464
Purification Method: Protein A purification	Immunogen Catalog Number: Ag6969	

Applications

Tested Applications: Sandwich ELISA	Range: 1.56-100 ng/mL (Sandwich ELISA)	Recommended Dilutions: It is recommended that this reagent should be titrated in each testing system to obtain optimal results.
---	--	---

Product Information

MP01999-2 targets PPA1 in immunoassays as a matched antibody pair. Validated in Sandwich ELISA.

Capture antibody: PPA1 Recombinant antibody, PBS Only (Capture/Detector) 85445-1-PBS (242963E11). 100 µg. Concentration 1 mg/mL.

Detection antibody: PPA1 Recombinant antibody, PBS Only (Capture/Detector) 85445-2-PBS (242963H8). 100 µg. Concentration 1 mg/mL.

Unconjugated rabbit recombinant monoclonal antibody pair in PBS only storage buffer at a concentration of 1 mg/mL, ready for conjugation. Created using Proteintech's proprietary in-house recombinant technology. Recombinant production enables unrivalled batch-to-batch consistency, easy scale-up, and future security of supply.

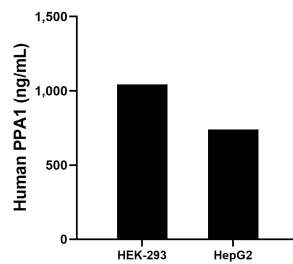
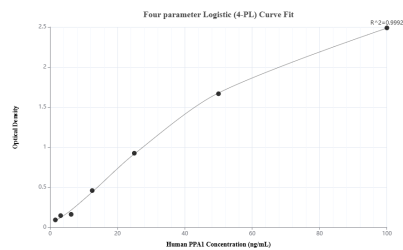
Matched antibody pairs are designed for use in a variety of assays and platforms that require matched antibody pairs.

Antibody use should be optimized for each application and assay.

Storage

Storage:
Store at -80°C.
The product is shipped with ice packs. Upon receipt, store it immediately at -80°C
Storage buffer:
PBS only

Selected Validation Data



Sandwich ELISA standard curve of MP01999-2, Human PPA1 Recombinant Matched Antibody Pair - PBS only. 85445-1-PBS was coated to a plate as the capture antibody and incubated with serial dilutions of standard Ag6969. 85445-2-PBS was HRP conjugated as the detection antibody. Range: 1.56-100 ng/mL

The mean PPA1 concentration was determined to be 1,041.72 ng/mL in HEK-293 cell extract based on a 2.2 mg/mL extract load and 739.41 ng/mL in HepG2 cell extract based on a 1.8 mg/mL extract load.