

# ALDH1B1 Recombinant Matched Antibody Pair, PBS Only

Catalog Number: **MP01995-1**

## Capture Antibody Information

**Catalog Number:**  
85426-1-PBS

**Host:**  
Rabbit

**Isotype:**  
IgG

**Purification Method:**  
Protein A purification

**Clone ID:**  
242944C5

**Reactivity:**  
human

**GenBank:**  
BC001619

**Immunogen Catalog Number:**  
Ag7144

**Conjugate:**  
Unconjugated

**Full name:**  
aldehyde dehydrogenase 1 family, member B1

**Gene ID:**  
219

## Detection Antibody Information

**Catalog Number:**  
85426-2-PBS

**Host:**  
Rabbit

**Isotype:**  
IgG

**Purification Method:**  
Protein A purification

**Clone ID:**  
242944E7

**Reactivity:**  
human

**GenBank:**  
BC001619

**Immunogen Catalog Number:**  
Ag7144

**Conjugate:**  
Unconjugated

**Full name:**  
aldehyde dehydrogenase 1 family, member B1

**Gene ID:**  
219

## Applications

**Tested Applications:**  
Cytometric bead array, Sandwich ELISA

**Range:**  
0.781-100 ng/mL (Cytometric Bead Array)  
0.791-50 ng/mL (Sandwich ELISA)

**Recommended Dilutions:**  
It is recommended that this reagent should be titrated in each testing system to obtain optimal results.

## Product Information

MP01995-1 targets ALDH1B1 in immunoassays as a matched antibody pair. Validated in Cytometric bead array, Sandwich ELISA.

Capture antibody: ALDH1B1 Recombinant antibody, PBS Only (Capture) 85426-1-PBS (242944C5). 100 µg. Concentration 1 mg/mL.

Detection antibody: ALDH1B1 Recombinant antibody, PBS Only (Detector) 85426-2-PBS (242944E7). 100 µg. Concentration 1 mg/mL.

Unconjugated rabbit recombinant monoclonal antibody pair in PBS only storage buffer at a concentration of 1 mg/mL, ready for conjugation. Created using Proteintech's proprietary in-house recombinant technology. Recombinant production enables unrivalled batch-to-batch consistency, easy scale-up, and future security of supply.

Matched antibody pairs are designed for use in a variety of assays and platforms that require matched antibody pairs.

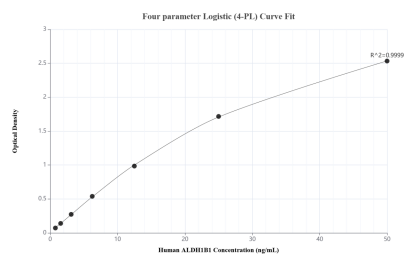
Antibody use should be optimized for each application and assay.

## Storage

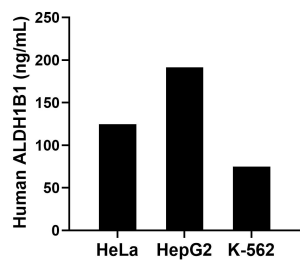
**Storage:**  
Store at -80°C.  
**The product is shipped with ice packs. Upon receipt, store it immediately at -80°C**

**Storage buffer:**  
PBS only

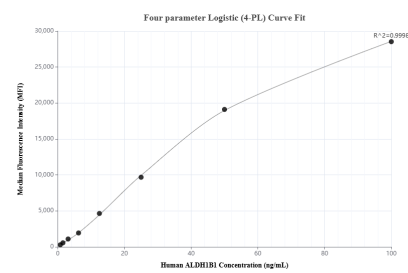
## Selected Validation Data



Sandwich ELISA standard curve of MP01995-1, Human ALDH1B1 Recombinant Matched Antibody Pair - PBS only. 85426-1-PBS was coated to a plate as the capture antibody and incubated with serial dilutions of standard Ag7144. 85426-2-PBS was HRP conjugated as the detection antibody. Range: 0.791-50 ng/mL.



The mean ALDH1B1 concentration was determined to be 124.73 ng/mL in HeLa cell extract based on a 1.80 mg/mL extract load, 191.33 ng/mL in HepG2 cell extract based on a 1.80 mg/mL extract load and 74.97 ng/mL in K-562 cell extract based on a 2.50 mg/mL extract load.



Cytometric bead array standard curve of MP01995-1, ALDH1B1 Recombinant Matched Antibody Pair, PBS Only. Capture antibody: 85426-1-PBS. Detection antibody: 85426-2-PBS. Standard: Ag7144. Range: 0.781-100 ng/mL.