

CA12 Recombinant Matched Antibody Pair, PBS Only

Catalog Number: **MP01993-1**

Capture Antibody Information

Catalog Number: 85595-3-PBS	Clone ID: 243053B2	Conjugate: Unconjugated
Host: Rabbit	Reactivity: human, mouse, rat	Full name: carbonic anhydrase XII
Isotype: IgG	GenBank: BC000278	Gene ID: 771
Purification Method: Protein A purification	Immunogen Catalog Number: Ag7107	

Detection Antibody Information

Catalog Number: 85595-2-PBS	Clone ID: 243053A9	Conjugate: Unconjugated
Host: Rabbit	Reactivity: human	Full name: carbonic anhydrase XII
Isotype: IgG	GenBank: BC000278	Gene ID: 771
Purification Method: Protein A purification	Immunogen Catalog Number: Ag7107	

Applications

Tested Applications: Cytometric bead array, Sandwich ELISA	Range: 0.781-100 ng/mL (Cytometric Bead Array) 0.625-40 ng/mL (Sandwich ELISA)	Recommended Dilutions: It is recommended that this reagent should be titrated in each testing system to obtain optimal results.
---	--	--

Product Information

MP01993-1 targets CA12 in immunoassays as a matched antibody pair. Validated in Cytometric bead array, Sandwich ELISA.

Capture antibody: CA12 Recombinant antibody, PBS Only (Capture) 85595-3-PBS (243053B2). 100 µg. Concentration 1 mg/mL.

Detection antibody: CA12 Recombinant antibody, PBS Only (Detector) 85595-2-PBS (243053A9). 100 µg. Concentration 1 mg/mL.

Unconjugated rabbit recombinant monoclonal antibody pair in PBS only storage buffer at a concentration of 1 mg/mL, ready for conjugation. Created using Proteintech's proprietary in-house recombinant technology. Recombinant production enables unrivalled batch-to-batch consistency, easy scale-up, and future security of supply.

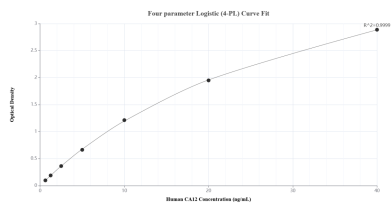
Matched antibody pairs are designed for use in a variety of assays and platforms that require matched antibody pairs.

Antibody use should be optimized for each application and assay.

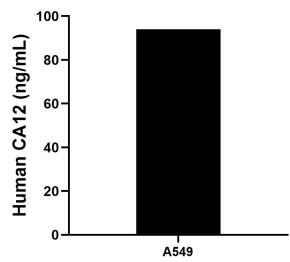
Storage

Storage:
Store at -80°C.
The product is shipped with ice packs. Upon receipt, store it immediately at -80°C
Storage buffer:
PBS only

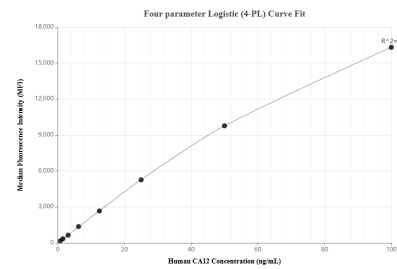
Selected Validation Data



Sandwich ELISA standard curve of MP01993-1, Human CA12 Recombinant Matched Antibody Pair - PBS only. 85595-3-PBS was coated to a plate as the capture antibody and incubated with serial dilutions of standard Ag7107. 85595-2-PBS was HRP conjugated as the detection antibody. Range: 0.625-40 ng/mL



The mean CA12 concentration was determined to be 93.99 ng/mL in A549 cell extract based on a 3.10 mg/mL extract load.



Cytometric bead array standard curve of MP01993-1, CA12 Recombinant Matched Antibody Pair, PBS Only. Capture antibody: 85595-3-PBS. Detection antibody: 85595-2-PBS. Standard: Ag7107. Range: 0.781-100 ng/mL