

GLUD2 Recombinant Matched Antibody Pair, PBS Only

Catalog Number: MP01985-3

Capture Antibody Information

Catalog Number: 85602-6-PBS	Clone ID: 243041G12	Conjugate: Unconjugated
Host: Rabbit	Reactivity: human	Full name: glutamate dehydrogenase 2
Isotype: IgG	GenBank: BC050732	Gene ID: 2747
Purification Method: Protein A purification	Immunogen Catalog Number: Ag5748	

Detection Antibody Information

Catalog Number: 85602-1-PBS	Clone ID: 243041F8	Conjugate: Unconjugated
Host: Rabbit	Reactivity: human	Full name: glutamate dehydrogenase 2
Isotype: IgG	GenBank: BC050732	Gene ID: 2747
Purification Method: Protein A purification	Immunogen Catalog Number: Ag5748	

Applications

Tested Applications: Sandwich ELISA	Range: 0.313-20 ng/mL (Sandwich ELISA)	Recommended Dilutions: It is recommended that this reagent should be titrated in each testing system to obtain optimal results.
--	---	--

Product Information

MP01985-3 targets GLUD2 in immunoassays as a matched antibody pair. Validated in Sandwich ELISA.

Capture antibody: GLUD2 Recombinant antibody, PBS Only (Capture) 85602-6-PBS (243041G12). 100 µg. Concentration 1 mg/mL.

Detection antibody: GLUD2 Recombinant antibody, PBS Only (Detector) 85602-1-PBS (243041F8). 100 µg. Concentration 1 mg/mL.

Unconjugated rabbit recombinant monoclonal antibody pair in PBS only storage buffer at a concentration of 1 mg/mL, ready for conjugation. Created using Proteintech's proprietary in-house recombinant technology. Recombinant production enables unrivalled batch-to-batch consistency, easy scale-up, and future security of supply.

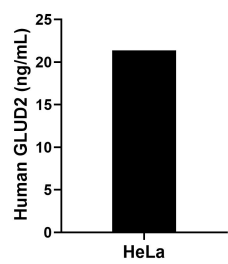
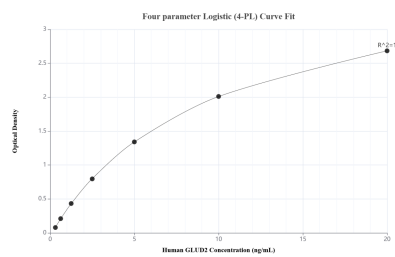
Matched antibody pairs are designed for use in a variety of assays and platforms that require matched antibody pairs.

Antibody use should be optimized for each application and assay.

Storage

Storage:
Store at -80°C.
The product is shipped with ice packs. Upon receipt, store it immediately at -80°C
 Storage buffer:
 PBS only

Selected Validation Data



Sandwich ELISA standard curve of MP01985-3, Human GLUD2 Recombinant Matched Antibody Pair - PBS only. 85602-6-PBS was coated to a plate as the capture antibody and incubated with serial dilutions of standard Ag5748. 85602-1-PBS was HRP conjugated as the detection antibody. Range: 0.313-20 ng/mL.

The mean GLUD2 concentration was determined to be 21.35 ng/mL in HeLa cell extract based on a 1.80 mg/mL extract load.