

PGLYRP1 Recombinant Matched Antibody Pair, PBS Only

Catalog Number: **MP01966-2**

Capture Antibody Information

Catalog Number:
85610-3-PBS

Host:
Rabbit

Isotype:
IgG

Purification Method:
Protein A purification

Clone ID:
243004F3

Reactivity:
human

GenBank:
NM_005091.2

Conjugate:
Unconjugated

Full name:
peptidoglycan recognition protein 1

Gene ID:
8993

Detection Antibody Information

Catalog Number:
85610-1-PBS

Host:
Rabbit

Isotype:
IgG

Purification Method:
Protein A purification

Clone ID:
243004B11

Reactivity:
human

GenBank:
NM_005091.2

Conjugate:
Unconjugated

Full name:
peptidoglycan recognition protein 1

Gene ID:
8993

Applications

Tested Applications:
Cytometric bead array, Sandwich ELISA

Range:
1.563-50 ng/mL (Cytometric Bead Array)
0.156-10 ng/mL (Sandwich ELISA)

Recommended Dilutions:
It is recommended that this reagent should be titrated in each testing system to obtain optimal results.

Product Information

MP01966-2 targets PGLYRP1 in immunoassays as a matched antibody pair. Validated in Cytometric bead array, Sandwich ELISA.

Capture antibody: PGLYRP1 Recombinant antibody, PBS Only (Capture) 85610-3-PBS (243004F3). 100 µg. Concentration 1 mg/mL.

Detection antibody: PGLYRP1 Recombinant antibody, PBS Only (Detector) 85610-1-PBS (243004B11). 100 µg. Concentration 1 mg/mL.

Unconjugated rabbit recombinant monoclonal antibody pair in PBS only storage buffer at a concentration of 1 mg/mL, ready for conjugation. Created using Proteintech's proprietary in-house recombinant technology. Recombinant production enables unrivalled batch-to-batch consistency, easy scale-up, and future security of supply.

Matched antibody pairs are designed for use in a variety of assays and platforms that require matched antibody pairs.

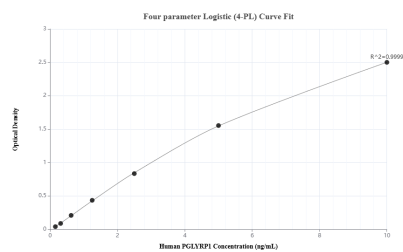
Antibody use should be optimized for each application and assay.

Storage

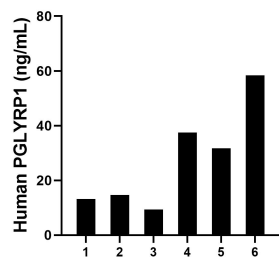
Storage:
Store at -80°C.
The product is shipped with ice packs. Upon receipt, store it immediately at -80°C

Storage buffer:
PBS only

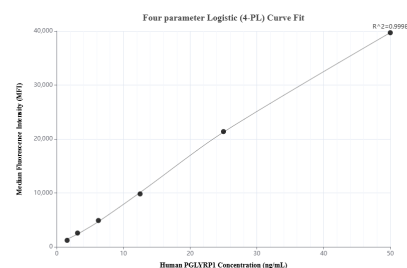
Selected Validation Data



Sandwich ELISA standard curve of MP01966-2, Human PGLYRP1 Recombinant Matched Antibody Pair - PBS only. 85610-3-PBS was coated to a plate as the capture antibody and incubated with serial dilutions of standard Eg3122. 85610-1-PBS was HRP conjugated as the detection antibody. Range: 0.156-10 ng/mL



Saliva of six individual healthy human donors was measured. The human PGLYRP1 concentration of detected samples was determined to be 27.47 ng/mL with a range of 9.3 - 58.4 ng/mL



Cytometric bead array standard curve of MP01966-2, PGLYRP1 Recombinant Matched Antibody Pair, PBS Only. Capture antibody: 85610-3-PBS. Detection antibody: 85610-1-PBS. Standard: Eg3122. Range: 1.563-50 ng/mL