

For Research Use Only

Mouse Tslp Recombinant Matched Antibody Pair, PBS Only



Catalog Number:MP01963-1

Capture Antibody Information

Catalog Number:
85623-3-PBS
Host:
Rabbit
Isotype:
IgG
Purification Method:
Protein A purification

Clone ID:
242914C6
Reactivity:
mouse
GenBank:
NM_021367.2
Immunogen Catalog Number:
Eg3312

Conjugate:
Unconjugated
Full name:
thymic stromal lymphopoietin
Gene ID:
53603

Detection Antibody Information

Catalog Number:
85623-1-PBS
Host:
Rabbit
Isotype:
IgG
Purification Method:
Protein A purification

Clone ID:
242914F6
Reactivity:
mouse
GenBank:
NM_021367.2
Immunogen Catalog Number:
Eg3312

Conjugate:
Unconjugated
Full name:
thymic stromal lymphopoietin
Gene ID:
53603

Applications

Tested Applications:
Cytometric bead array, Sandwich ELISA

Range:
0.625-20 ng/mL (Cytometric Bead Array)
0.156-10 ng/mL (Sandwich ELISA)

Recommended Dilutions:
It is recommended that this reagent should be titrated in each testing system to obtain optimal results.

Product Information

MP01963-1 targets Tslp in immunoassays as a matched antibody pair. Validated in Cytometric bead array, Sandwich ELISA.

Capture antibody: Mouse Tslp Recombinant antibody, PBS Only (Capture) 85623-3-PBS (242914C6). 100 µg. Concentration 1 mg/mL.

Detection antibody: Mouse Tslp Recombinant antibody, PBS Only (Detector) 85623-1-PBS (242914F6). 100 µg. Concentration 1 mg/mL.

Unconjugated rabbit recombinant monoclonal antibody pair in PBS only storage buffer at a concentration of 1 mg/mL, ready for conjugation. Created using Proteintech's proprietary in-house recombinant technology. Recombinant production enables unrivalled batch-to-batch consistency, easy scale-up, and future security of supply.

Matched antibody pairs are designed for use in a variety of assays and platforms that require matched antibody pairs.

Antibody use should be optimized for each application and assay.

Storage

Storage:
Store at -80°C.

The product is shipped with ice packs. Upon receipt, store it immediately at -80°C

Storage buffer:
PBS only

For technical support and original validation data for this product please contact:

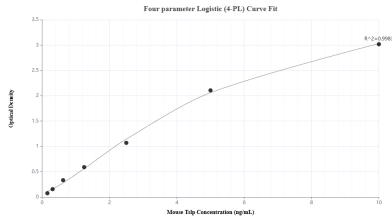
T: 4006900926

E: Proteintech-CN@ptglab.com

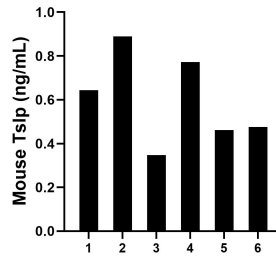
W: ptgcn.com

This product is exclusively available under Proteintech Group brand and is not available to purchase from any other manufacturer.

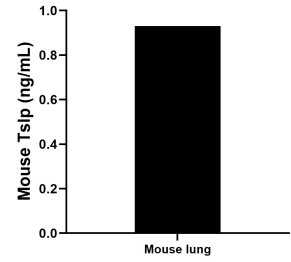
Selected Validation Data



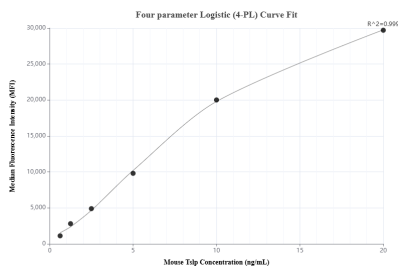
Sandwich ELISA standard curve of MP01963-1, Mouse Tslp Recombinant Matched Antibody Pair - PBS only. 85623-3-PBS was coated to a plate as the capture antibody and incubated with serial dilutions of standard Eg3312. 85623-1-PBS was HRP conjugated as the detection antibody. Range: 0.156-10 ng/mL



Serum of six mice was measured. The mouse Tslp concentration of detected samples was determined to be 0.60 ng/mL with a range of 0.35 - 0.89 ng/mL



Mouse lung (1 lung, 1-2 mm pieces) were cultured for 5 days in RPMI 1640 plus 15% fetal bovine serum. An aliquot of cell culture supernatants was removed, assayed for mouse Tslp and measured 0.93 ng/mL



Cytometric bead array standard curve of MP01963-1, MOUSE Tslp Recombinant Matched Antibody Pair, PBS Only. Capture antibody: 85623-3-PBS. Detection antibody: 85623-1-PBS. Standard: Eg3312. Range: 0.625-20 ng/mL