

XDH Recombinant Matched Antibody Pair, PBS Only

Catalog Number: **MP01961-1**

Capture Antibody Information

Catalog Number:
85206-1-PBS
Host:
Rabbit
Isotype:
IgG
Purification Method:
Protein A purification

Clone ID:
242724E1
Reactivity:
human
GenBank:
NM_000379

Conjugate:
Unconjugated
Full name:
xanthine dehydrogenase
Gene ID:
7498

Detection Antibody Information

Catalog Number:
85206-2-PBS
Host:
Rabbit
Isotype:
IgG
Purification Method:
Protein A purification

Clone ID:
242724F1
Reactivity:
human
GenBank:
NM_000379

Conjugate:
Unconjugated
Full name:
xanthine dehydrogenase
Gene ID:
7498

Applications

Tested Applications:
Sandwich ELISA

Range:
0.313-20 ng/mL (Sandwich ELISA)

Recommended Dilutions:
It is recommended that this reagent should be titrated in each testing system to obtain optimal results.

Product Information

MP01961-1 targets XDH in immunoassays as a matched antibody pair. Validated in Sandwich ELISA.

Capture antibody: XDH Recombinant antibody, PBS Only (Capture) 85206-1-PBS (242724E1). 100 µg. Concentration 1 mg/mL.

Detection antibody: XDH Recombinant antibody, PBS Only (Detector) 85206-2-PBS (242724F1). 100 µg. Concentration 1 mg/mL.

Unconjugated rabbit recombinant monoclonal antibody pair in PBS only storage buffer at a concentration of 1 mg/mL, ready for conjugation. Created using Proteintech's proprietary in-house recombinant technology. Recombinant production enables unrivalled batch-to-batch consistency, easy scale-up, and future security of supply.

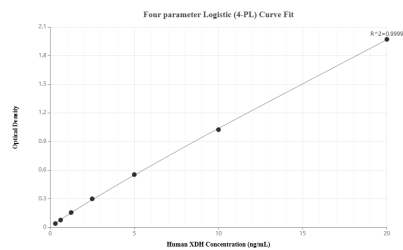
Matched antibody pairs are designed for use in a variety of assays and platforms that require matched antibody pairs.

Antibody use should be optimized for each application and assay.

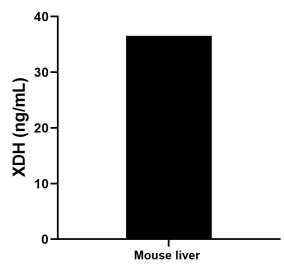
Storage

Storage:
Store at -80°C.
The product is shipped with ice packs. Upon receipt, store it immediately at -80°C
Storage buffer:
PBS only

Selected Validation Data



Sandwich ELISA standard curve of MP01961-1, Human XDH Recombinant Matched Antibody Pair - PBS only. 85206-1-PBS was coated to a plate as the capture antibody and incubated with serial dilutions of standard SY01209. 85206-2-PBS was HRP conjugated as the detection antibody. Range: 0.313-20 ng/mL



The mean XDH concentration was determined to be 36.55 ng/mL in mouse liver tissue extract based on a 3.7 mg/mL extract load.