

CPSF7 Recombinant Matched Antibody Pair, PBS Only

Catalog Number: **MP01956-1**

Capture Antibody Information

Catalog Number:
85203-1-PBS
Host:
Rabbit
Isotype:
IgG
Purification Method:
Protein A purification

Clone ID:
242644E1
Reactivity:
human, mouse
GenBank:
NM_001136040

Conjugate:
Unconjugated
Full name:
pre-mRNA cleavage factor I, 59 kDa subunit
Gene ID:
79869

Detection Antibody Information

Catalog Number:
85203-2-PBS
Host:
Rabbit
Isotype:
IgG
Purification Method:
Protein A purification

Clone ID:
242644F11
Reactivity:
human
GenBank:
NM_001136040

Conjugate:
Unconjugated
Full name:
pre-mRNA cleavage factor I, 59 kDa subunit
Gene ID:
79869

Applications

Tested Applications:
Sandwich ELISA

Range:
19.5-1250 pg/mL (Sandwich ELISA)

Recommended Dilutions:
It is recommended that this reagent should be titrated in each testing system to obtain optimal results.

Product Information

MP01956-1 targets CPSF7 in immunoassays as a matched antibody pair. Validated in Sandwich ELISA.

Capture antibody: CPSF7 Recombinant antibody, PBS Only (Capture) 85203-1-PBS (242644E1). 100 µg. Concentration 1 mg/mL.

Detection antibody: CPSF7 Recombinant antibody, PBS Only (Detector) 85203-2-PBS (242644F11). 100 µg. Concentration 1 mg/mL.

Unconjugated rabbit recombinant monoclonal antibody pair in PBS only storage buffer at a concentration of 1 mg/mL, ready for conjugation. Created using Proteintech's proprietary in-house recombinant technology. Recombinant production enables unrivalled batch-to-batch consistency, easy scale-up, and future security of supply.

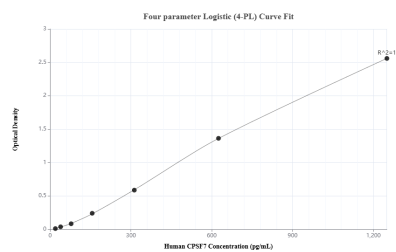
Matched antibody pairs are designed for use in a variety of assays and platforms that require matched antibody pairs.

Antibody use should be optimized for each application and assay.

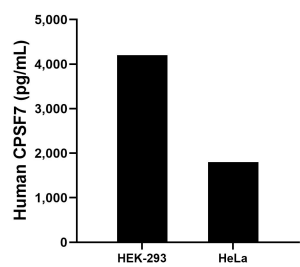
Storage

Storage:
Store at -80°C.
The product is shipped with ice packs. Upon receipt, store it immediately at -80°C
Storage buffer:
PBS only

Selected Validation Data



Sandwich ELISA standard curve of MP01956-1, Human CPSF7 Recombinant Matched Antibody Pair - PBS only. 85203-1-PBS was coated to a plate as the capture antibody and incubated with serial dilutions of standard SY01255. 85203-2-PBS was HRP conjugated as the detection antibody. Range: 19.5-1250 pg/mL



The mean CPSF7 concentration was determined to be 4,199.1 pg/mL in HEK-293 cell extract based on a 2.7 mg/mL extract load and 1,800.3 pg/mL in HeLa cell extract based on a 1.5 mg/mL extract load.